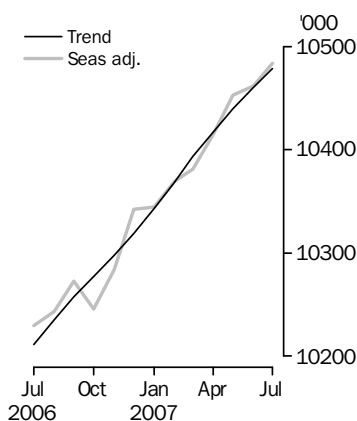


# LABOUR FORCE

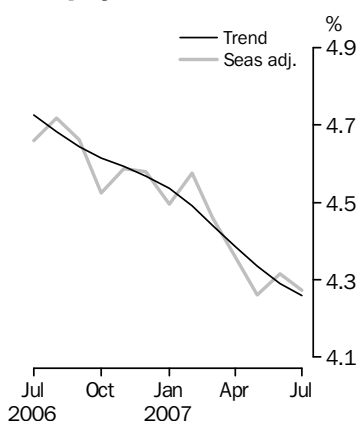
AUSTRALIA

EMBARGO: 11.30AM (CANBERRA TIME) THURS 9 AUG 2007

## Employed Persons



## Unemployment rate



## INQUIRIES

For further information about these and related statistics, contact the National Information and Referral Service on 1300 135 070 or Rebecca Cash on Canberra (02) 6252 6525.

## KEY FIGURES

	Jun 2007	Jul 2007	Jun 07 to Jul 07	Jul 06 to Jul 07
<b>Trend</b>				
Employed persons ('000)	10 460.6	10 478.5	17.9	2.6 %
Unemployed persons ('000)	469.0	466.2	-2.8	-7.9 %
Unemployment rate (%)	4.3	4.3	0.0 pts	-0.5 pts
Participation rate (%)	64.9	65.0	0.0 pts	0.3 pts
<b>Seasonally Adjusted</b>				
Employed persons ('000)	10 462.0	10 483.7	21.8	2.5 %
Unemployed persons ('000)	471.8	467.9	-3.9	-6.4 %
Unemployment rate (%)	4.3	4.3	0.0 pts	-0.4 pts
Participation rate (%)	65.0	65.0	0.0 pts	0.2 pts

## KEY POINTS

### TREND ESTIMATES (MONTHLY CHANGE)

- EMPLOYMENT increased to 10,478,500
- UNEMPLOYMENT decreased to 466,200
- UNEMPLOYMENT RATE remained at 4.3%
- PARTICIPATION RATE increased to 65.0%

### SEASONALLY ADJUSTED ESTIMATES (MONTHLY CHANGE)

#### EMPLOYMENT

- increased by 21,800 to 10,483,700. Full-time employment increased by 21,700 to 7,514,700 and part-time employment remained at 2,969,000.

#### UNEMPLOYMENT

- decreased by 3,900 to 467,900. The number of persons looking for full-time work decreased by 6,600 to 324,100 and the number of persons looking for part-time work increased by 2,700 to 143,800.

#### UNEMPLOYMENT RATE

- remained at 4.3%. The male unemployment rate decreased by 0.1 percentage point but the rounded estimate remained at 3.9%, and the female unemployment rate remained at 4.8%.

#### PARTICIPATION RATE

- remained at 65.0%.

# NOTES

## FORTHCOMING ISSUES

<i>ISSUE</i>	<i>RELEASE DATE</i>
August 2007	6 September 2007
September 2007	11 October 2007
October 2007	8 November 2007
November 2007	13 December 2007
December 2007	17 January 2008
January 2008	14 February 2008

## REFORMS TO INCOME SUPPORT

In the 2005-06 Budget the Commonwealth Government announced reforms to income support eligibility and participation requirements. Changes in these programs are being implemented progressively but many of the initiatives took effect from July 2007. While the reforms may change a person's eligibility or participation requirements for income support, the reforms have not changed the way the Australian Bureau of Statistics conducts the Labour Force Survey (LFS) or the definitions used in the survey. The LFS does not ask any questions directly related to participation in labour market or income support programs. Such information is neither necessary nor sufficient to determine labour force status. Individual participants are counted as employed, unemployed or not in the labour force according to economic (work-related) activity undertaken in the survey reference period. The labour force measure, based on economic activity tests, is thus consistent over time and independent of changes to labour market or income support programs. The ABS is unable to estimate the impact on labour force estimates attributable to such changes.

## SAMPLING ERRORS

The estimates in this publication are based on a sample survey. Because the entire population is not enumerated, the published estimates and the movements derived from them are subject to sampling variability. Standard errors give a measure of this variability and appear on pages 28 and 29.

The 95% confidence intervals below provide another way of looking at the variability inherent in estimates from sample surveys. The interval bounded by the two limits is the 95% confidence interval. A 95% confidence interval has a 95% chance of including the true value of the estimate.

## MOVEMENTS IN SEASONALLY ADJUSTED SERIES BETWEEN JUNE AND JULY 2007

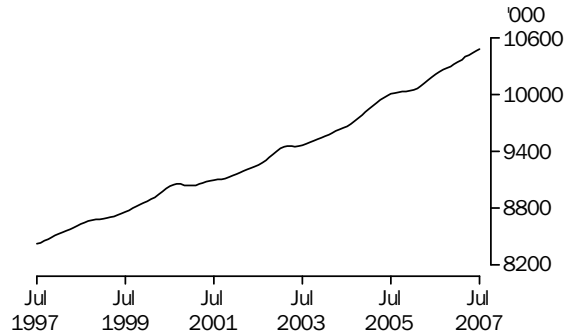
	<i>Monthly change</i>	<i>95% Confidence interval</i>	
Total Employment	21 800	-25 000	to 68 600
Total Unemployment	-3 900	-28 100	to 20 300
Unemployment rate	0.0 pts	-0.2 pts	to 0.2 pts
Participation rate	0.0 pts	-0.2 pts	to 0.2 pts

Susan Linacre  
Acting Australian Statistician

# PRINCIPAL LABOUR FORCE SERIES TREND ESTIMATES

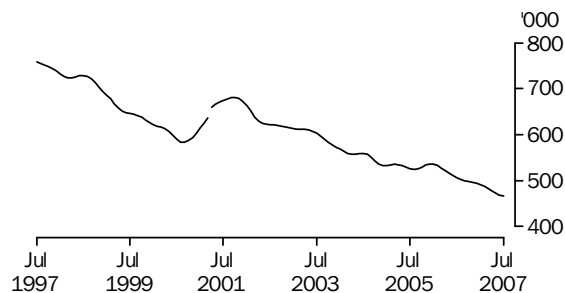
## EMPLOYED PERSONS

The trend estimate of employed persons rose from 8,425,300 in July 1997 to 9,056,400 in September 2000. The trend then fell slightly to 9,037,500 in December 2000, before generally rising to stand at a high of 10,478,500 in July 2007.



## UNEMPLOYED PERSONS

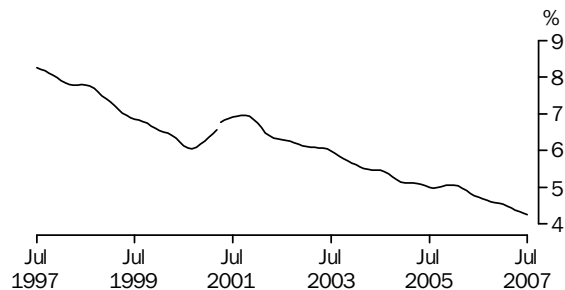
The trend estimate of unemployed persons generally fell from 758,600 in July 1997 to 583,100 in September 2000, before rising to 681,400 in October 2001. The trend then fell to 531,600 in January 2005, remained relatively stable for 12 months, before falling to stand at 466,200 in July 2007.



Series break at April 2001; see paragraph 16 of Explanatory Notes.

## UNEMPLOYMENT RATE

The trend unemployment rate generally fell from 8.3% in July 1997 to 6.0% in September 2000. After rising to 7.0% in October 2001, the trend has generally fallen to stand at 4.3% in July 2007.



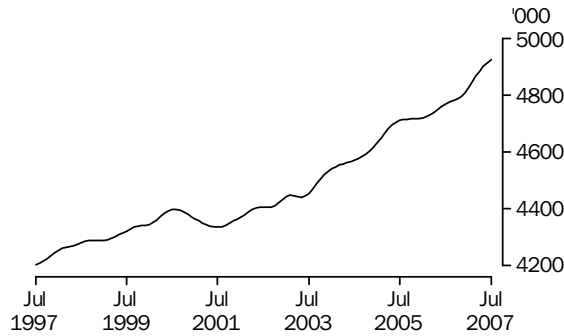
Series break at April 2001; see paragraph 16 of Explanatory Notes.

## EMPLOYED PERSONS TREND ESTIMATES

### MALES EMPLOYED FULL TIME

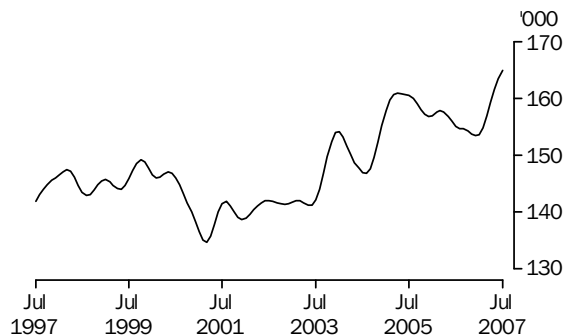
#### TOTAL

The trend estimate for males employed full time generally rose from 4,202,600 in July 1997 to 4,398,800 in August 2000, before falling to 4,336,100 in July 2001. Since then, the trend has risen to stand at 4,924,500 in July 2007.



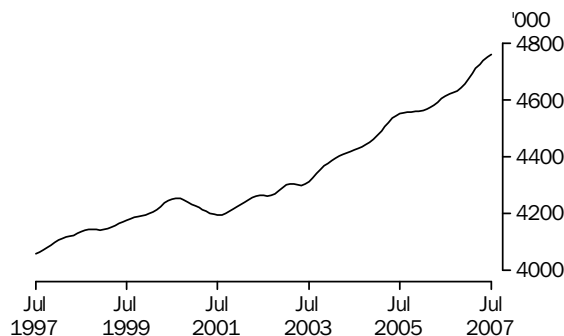
#### MALES AGED 15-19 YEARS

Although fluctuating, the trend estimates of males aged 15 to 19 years employed full time decreased from 141,900 in July 1997 to 134,800 in March 2001. Despite falls in 2001 and 2004, the trend increased to 160,900 in April 2005. The trend then fell to 153,400 in December 2006 and has since increased to stand at 164,800 in July 2007.



#### MALES AGED 20 YEARS AND OVER

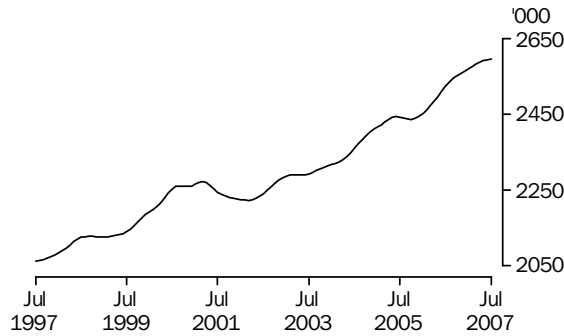
The trend estimate of males aged 20 years and over employed full time rose gradually from 4,060,700 in July 1997 to 4,254,100 in August 2000. After a slight fall to 4,194,500 in July 2001, the trend has since generally risen to stand at 4,759,700 in July 2007.



FEMALES EMPLOYED FULL TIME

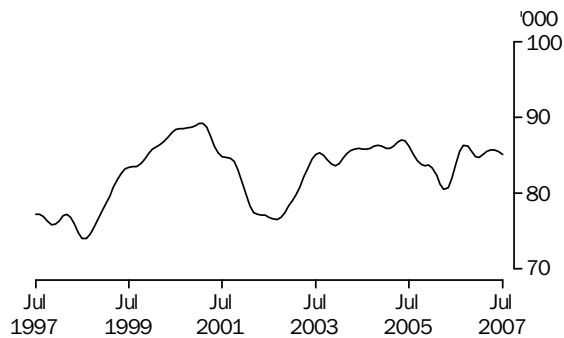
TOTAL

The trend estimate of females employed full time generally rose from 2,063,200 in July 1997 to 2,271,700 in March 2001. The trend then fell to 2,222,800 in March 2002, before generally rising to stand at 2,595,800 in July 2007.



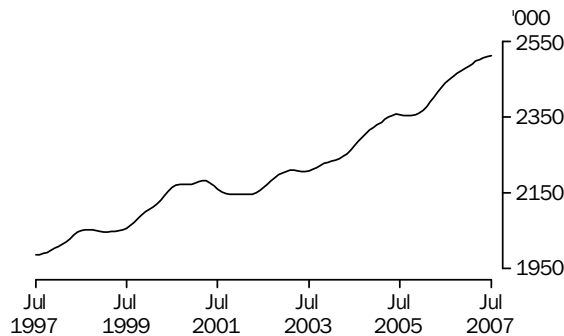
FEMALES AGED 15-19 YEARS

The trend estimate of females aged 15 to 19 years employed full time generally rose from 77,200 in July 1997 to 89,200 in February 2001. The trend then fell to 76,500 in September 2002, before rising to 87,000 in May 2005. Apart from a fall to 80,500 in April 2006, the series has since been relatively stable and stands at 85,100 in July 2007.



FEMALES AGED 20 YEARS AND OVER

The trend estimate of females aged 20 years and over employed full time generally rose from 1,986,000 in July 1997 to 2,183,000 in March 2001. After falling slightly to 2,145,300 in December 2001, the trend has generally risen to stand at 2,510,700 in July 2007.



LABOUR FORCE STATUS (AGED 15 YEARS & OVER): Trend

	EMPLOYED			UNEMPLOYED		UNEMPLOYMENT RATE			Participation rate
	Full time	Part time	Total	Looking for f/t work	Total	Labour force	Looking for f/t work	Total	
	'000	'000	'000	'000	'000	'000	%	%	
MALES									
July 2004	4 570.9	790.3	5 361.1	243.7	304.3	5 665.4	5.1	5.4	71.5
July 2005	4 710.8	810.8	5 521.6	222.7	279.7	5 801.3	4.5	4.8	72.2
2006									
July	4 768.5	846.5	5 614.9	215.1	272.3	5 887.2	4.3	4.6	72.2
August	4 774.8	853.1	5 627.9	213.3	270.6	5 898.5	4.3	4.6	72.2
September	4 779.8	860.7	5 640.5	211.3	268.4	5 908.9	4.2	4.5	72.2
October	4 785.8	867.0	5 652.8	208.9	265.3	5 918.1	4.2	4.5	72.2
November	4 795.0	870.4	5 665.4	206.8	261.7	5 927.1	4.1	4.4	72.2
December	4 808.8	870.6	5 679.4	204.6	257.7	5 937.1	4.1	4.3	72.2
2007									
January	4 826.8	868.6	5 695.3	201.8	253.3	5 948.7	4.0	4.3	72.2
February	4 847.2	865.1	5 712.3	198.4	249.0	5 961.3	3.9	4.2	72.2
March	4 867.2	861.8	5 729.0	194.5	244.8	5 973.8	3.8	4.1	72.3
April	4 884.8	860.0	5 744.8	190.4	240.7	5 985.6	3.8	4.0	72.3
May	4 900.4	859.6	5 760.0	186.6	237.1	5 997.0	3.7	4.0	72.3
June	4 914.0	859.5	5 773.4	183.3	234.1	6 007.5	3.6	3.9	72.4
July	4 924.5	860.6	5 785.1	180.6	231.7	6 016.8	3.5	3.9	72.4
FEMALES									
July 2004	2 359.5	1 946.8	4 306.3	159.5	254.6	4 560.9	6.3	5.6	55.6
July 2005	2 442.8	2 040.5	4 483.2	149.5	246.3	4 729.5	5.8	5.2	57.0
2006									
July	2 522.6	2 073.7	4 596.3	141.7	234.2	4 830.5	5.3	4.8	57.5
August	2 534.8	2 073.0	4 607.8	142.5	232.2	4 840.0	5.3	4.8	57.5
September	2 544.6	2 072.3	4 616.9	143.8	231.3	4 848.2	5.3	4.8	57.5
October	2 552.3	2 072.4	4 624.7	145.4	232.0	4 856.7	5.4	4.8	57.6
November	2 557.8	2 074.1	4 632.0	146.4	234.0	4 866.0	5.4	4.8	57.6
December	2 562.8	2 076.8	4 639.7	146.5	236.3	4 876.0	5.4	4.8	57.6
2007									
January	2 568.7	2 079.1	4 647.9	145.7	238.1	4 886.0	5.4	4.9	57.7
February	2 575.4	2 081.0	4 656.5	144.3	238.7	4 895.2	5.3	4.9	57.7
March	2 582.0	2 082.8	4 664.8	143.1	238.3	4 903.1	5.2	4.9	57.7
April	2 587.3	2 085.2	4 672.5	142.4	237.1	4 909.6	5.2	4.8	57.7
May	2 591.4	2 088.7	4 680.1	142.5	235.9	4 916.0	5.2	4.8	57.7
June	2 594.0	2 093.1	4 687.2	142.8	234.9	4 922.1	5.2	4.8	57.7
July	2 595.8	2 097.6	4 693.3	143.5	234.5	4 927.9	5.2	4.8	57.7
PERSONS									
July 2004	6 930.4	2 737.0	9 667.4	403.2	558.9	10 226.3	5.5	5.5	63.4
July 2005	7 153.5	2 851.3	10 004.8	372.2	526.0	10 530.8	4.9	5.0	64.5
2006									
July	7 291.0	2 920.2	10 211.2	356.8	506.5	10 717.7	4.7	4.7	64.7
August	7 309.6	2 926.1	10 235.7	355.8	502.8	10 738.5	4.6	4.7	64.8
September	7 324.4	2 933.0	10 257.4	355.1	499.6	10 757.1	4.6	4.6	64.8
October	7 338.1	2 939.4	10 277.5	354.3	497.2	10 774.7	4.6	4.6	64.8
November	7 352.8	2 944.5	10 297.4	353.2	495.7	10 793.1	4.6	4.6	64.8
December	7 371.6	2 947.5	10 319.1	351.1	494.0	10 813.1	4.5	4.6	64.8
2007									
January	7 395.5	2 947.7	10 343.2	347.5	491.5	10 834.7	4.5	4.5	64.8
February	7 422.7	2 946.1	10 368.8	342.7	487.7	10 856.5	4.4	4.5	64.9
March	7 449.2	2 944.6	10 393.8	337.5	483.0	10 876.8	4.3	4.4	64.9
April	7 472.1	2 945.2	10 417.3	332.8	477.8	10 895.1	4.3	4.4	64.9
May	7 491.8	2 948.2	10 440.1	329.0	473.0	10 913.1	4.2	4.3	64.9
June	7 508.0	2 952.6	10 460.6	326.1	469.0	10 929.6	4.2	4.3	64.9
July	7 520.3	2 958.2	10 478.5	324.1	466.2	10 944.7	4.1	4.3	65.0

LABOUR FORCE STATUS (AGED 15 YEARS & OVER): **Seasonally Adjusted**

	EMPLOYED			UNEMPLOYED		UNEMPLOYMENT RATE			Participation rate
	Full time	Part time	Total	Looking for f/t work	Total	Labour force	Looking for f/t work	Total	
	'000	'000	'000	'000	'000	'000	%	%	
MALES									
July 2004	4 575.4	783.6	5 359.0	247.2	303.2	5 662.2	5.1	5.4	71.5
July 2005	4 706.8	814.5	5 521.2	215.7	273.1	5 794.3	4.4	4.7	72.1
2006									
July	4 776.2	852.0	5 628.2	216.3	271.7	5 899.8	4.3	4.6	72.3
August	4 780.1	851.8	5 631.9	213.2	271.6	5 903.5	4.3	4.6	72.3
September	4 794.6	851.1	5 645.7	211.1	272.0	5 917.7	4.2	4.6	72.4
October	4 763.0	873.6	5 636.6	201.2	257.3	5 893.9	4.1	4.4	71.9
November	4 790.0	869.8	5 659.8	206.3	261.9	5 921.7	4.1	4.4	72.1
December	4 810.5	883.6	5 694.2	203.3	253.5	5 947.7	4.1	4.3	72.3
2007									
January	4 829.0	863.0	5 692.0	203.6	254.2	5 946.3	4.0	4.3	72.2
February	4 847.8	862.4	5 710.2	200.3	252.1	5 962.3	4.0	4.2	72.3
March	4 869.1	857.9	5 727.0	195.1	247.4	5 974.5	3.9	4.1	72.3
April	4 885.0	860.4	5 745.3	189.5	236.5	5 981.9	3.7	4.0	72.3
May	4 906.5	855.8	5 762.3	181.8	233.0	5 995.3	3.6	3.9	72.3
June	4 910.6	867.2	5 777.7	186.9	237.2	6 014.9	3.7	3.9	72.5
July	4 928.1	858.9	5 787.0	179.5	232.1	6 019.1	3.5	3.9	72.4
FEMALES									
July 2004	2 356.9	1 945.7	4 302.6	170.8	263.0	4 565.6	6.8	5.8	55.7
July 2005	2 448.7	2 034.5	4 483.2	150.8	250.4	4 733.6	5.8	5.3	57.0
2006									
July	2 523.5	2 077.8	4 601.3	138.4	228.3	4 829.6	5.2	4.7	57.5
August	2 539.7	2 072.0	4 611.7	144.7	235.6	4 847.3	5.4	4.9	57.6
September	2 551.2	2 075.6	4 626.8	141.8	230.3	4 857.1	5.3	4.7	57.7
October	2 542.4	2 067.1	4 609.5	144.5	228.2	4 837.6	5.4	4.7	57.3
November	2 557.8	2 066.1	4 623.9	146.7	232.5	4 856.3	5.4	4.8	57.5
December	2 572.1	2 076.3	4 648.4	150.5	242.8	4 891.2	5.5	5.0	57.8
2007									
January	2 563.4	2 089.4	4 652.8	148.0	232.7	4 885.5	5.5	4.8	57.7
February	2 568.8	2 090.7	4 659.5	141.1	245.1	4 904.7	5.2	5.0	57.8
March	2 585.3	2 068.5	4 653.8	142.4	237.2	4 891.0	5.2	4.8	57.6
April	2 576.1	2 093.9	4 670.0	138.7	238.1	4 908.1	5.1	4.9	57.7
May	2 622.4	2 068.2	4 690.7	144.8	232.3	4 922.9	5.2	4.7	57.8
June	2 582.4	2 101.8	4 684.2	143.8	234.6	4 918.8	5.3	4.8	57.7
July	2 586.6	2 110.2	4 696.8	144.5	235.8	4 932.6	5.3	4.8	57.7
PERSONS									
July 2004	6 932.3	2 729.4	9 661.6	418.0	566.1	10 227.8	5.7	5.5	63.4
July 2005	7 155.5	2 849.0	10 004.4	366.5	523.5	10 527.9	4.9	5.0	64.4
2006									
July	7 299.7	2 929.8	10 229.5	354.7	499.9	10 729.4	4.6	4.7	64.8
August	7 319.9	2 923.8	10 243.6	357.9	507.2	10 750.9	4.7	4.7	64.8
September	7 345.9	2 926.7	10 272.6	352.8	502.3	10 774.8	4.6	4.7	64.9
October	7 305.3	2 940.7	10 246.0	345.7	485.5	10 731.5	4.5	4.5	64.5
November	7 347.8	2 935.8	10 283.7	353.0	494.3	10 778.0	4.6	4.6	64.7
December	7 382.6	2 959.9	10 342.5	353.8	496.3	10 838.8	4.6	4.6	64.9
2007									
January	7 392.4	2 952.5	10 344.8	351.7	487.0	10 831.8	4.5	4.5	64.8
February	7 416.6	2 953.2	10 369.8	341.4	497.3	10 867.0	4.4	4.6	64.9
March	7 454.4	2 926.4	10 380.8	337.6	484.6	10 865.4	4.3	4.5	64.8
April	7 461.1	2 954.3	10 415.3	328.2	474.7	10 890.0	4.2	4.4	64.9
May	7 529.0	2 924.0	10 452.9	326.6	465.3	10 918.2	4.2	4.3	65.0
June	7 493.0	2 969.0	10 462.0	330.7	471.8	10 933.8	4.2	4.3	65.0
July	7 514.7	2 969.0	10 483.7	324.1	467.9	10 951.6	4.1	4.3	65.0

LABOUR FORCE STATUS (AGED 15 YEARS & OVER): Original

	EMPLOYED			UNEMPLOYED			UNEMPLOYMENT RATE			Participation rate	
	Full time	Part time	Total	Looking for f/t work	Total	Labour force	Not in labour force	Civilian population aged 15 years and over	Looking for f/t work		Total
	'000	'000	'000	'000	'000	'000	'000	'000	%		%
MALES											
July 2004	4 578.1	787.1	5 365.2	231.3	280.0	5 645.2	2 278.4	7 923.6	4.8	5.0	71.2
July 2005	4 709.6	817.2	5 526.8	200.7	250.5	5 777.3	2 261.3	8 038.6	4.1	4.3	71.9
2006											
July	4 778.3	854.7	5 633.0	200.4	248.1	5 881.2	2 277.4	8 158.5	4.0	4.2	72.1
August	4 739.5	851.0	5 590.5	204.7	256.5	5 847.0	2 321.6	8 168.6	4.1	4.4	71.6
September	4 829.8	841.0	5 670.8	212.7	279.6	5 950.4	2 228.2	8 178.6	4.2	4.7	72.8
October	4 755.9	897.2	5 653.1	192.4	244.8	5 897.9	2 296.6	8 194.5	3.9	4.1	72.0
November	4 781.1	855.0	5 636.0	194.7	242.4	5 878.4	2 331.8	8 210.3	3.9	4.1	71.6
December	4 876.2	886.0	5 762.2	197.9	249.2	6 011.4	2 214.6	8 226.1	3.9	4.1	73.1
2007											
January	4 817.1	824.7	5 641.9	230.4	283.5	5 925.4	2 313.4	8 238.8	4.6	4.8	71.9
February	4 870.8	828.9	5 699.7	221.6	280.6	5 980.3	2 271.3	8 251.6	4.4	4.7	72.5
March	4 862.3	871.7	5 734.0	192.8	252.2	5 986.2	2 278.0	8 264.3	3.8	4.2	72.4
April	4 864.0	882.7	5 746.7	191.4	241.2	5 987.9	2 288.7	8 276.6	3.8	4.0	72.3
May	4 891.3	862.6	5 753.8	182.2	236.0	5 989.8	2 299.4	8 289.2	3.6	3.9	72.3
June	4 883.3	893.3	5 776.5	185.5	231.1	6 007.6	2 294.0	8 301.6	3.7	3.8	72.4
July	4 931.0	861.7	5 792.6	165.7	210.9	6 003.6	2 310.1	8 313.6	3.3	3.5	72.2
FEMALES											
July 2004	2 364.2	1 936.6	4 300.8	157.3	240.8	4 541.6	3 658.2	8 199.8	6.2	5.3	55.4
July 2005	2 455.7	2 024.6	4 480.3	139.0	229.5	4 709.7	3 588.0	8 297.7	5.4	4.9	56.8
2006											
July	2 530.6	2 068.4	4 599.0	127.5	209.2	4 808.2	3 596.3	8 404.5	4.8	4.4	57.2
August	2 495.9	2 081.5	4 577.5	131.0	223.1	4 800.6	3 613.3	8 413.9	5.0	4.6	57.1
September	2 611.7	2 071.3	4 683.1	137.6	228.3	4 911.4	3 512.1	8 423.4	5.0	4.6	58.3
October	2 529.3	2 086.5	4 615.8	130.8	207.8	4 823.6	3 613.0	8 436.6	4.9	4.3	57.2
November	2 563.5	2 063.3	4 626.8	133.5	208.1	4 834.9	3 615.1	8 450.0	4.9	4.3	57.2
December	2 630.6	2 075.6	4 706.2	151.6	242.5	4 948.7	3 514.5	8 463.2	5.4	4.9	58.5
2007											
January	2 564.2	2 006.4	4 570.5	171.5	254.4	4 825.0	3 649.1	8 474.1	6.3	5.3	56.9
February	2 589.7	2 038.3	4 628.0	167.3	286.9	4 914.9	3 570.2	8 485.0	6.1	5.8	57.9
March	2 559.4	2 098.9	4 658.3	151.3	259.3	4 917.7	3 578.3	8 495.9	5.6	5.3	57.9
April	2 542.4	2 114.6	4 657.1	140.3	243.5	4 900.6	3 606.7	8 507.3	5.2	5.0	57.6
May	2 587.6	2 109.8	4 697.4	142.7	230.4	4 927.8	3 590.9	8 518.7	5.2	4.7	57.8
June	2 565.4	2 131.4	4 696.8	140.7	228.8	4 925.5	3 604.5	8 530.1	5.2	4.6	57.7
July	2 593.9	2 101.4	4 695.3	132.9	215.7	4 911.1	3 630.8	8 541.9	4.9	4.4	57.5
PERSONS											
July 2004	6 942.2	2 723.7	9 666.0	388.6	520.8	10 186.8	5 936.6	16 123.4	5.3	5.1	63.2
July 2005	7 165.3	2 841.8	10 007.1	339.8	480.0	10 487.0	5 849.3	16 336.3	4.5	4.6	64.2
2006											
July	7 308.9	2 923.2	10 232.0	327.9	457.3	10 689.4	5 873.6	16 563.0	4.3	4.3	64.5
August	7 235.4	2 932.5	10 168.0	335.7	479.6	10 647.6	5 935.0	16 582.6	4.4	4.5	64.2
September	7 441.5	2 912.3	10 353.9	350.3	507.9	10 861.8	5 740.3	16 602.1	4.5	4.7	65.4
October	7 285.2	2 983.7	10 268.9	323.2	452.6	10 721.5	5 909.6	16 631.1	4.2	4.2	64.5
November	7 344.6	2 918.2	10 262.8	328.2	450.5	10 713.3	5 946.9	16 660.2	4.3	4.2	64.3
December	7 506.8	2 961.6	10 468.4	349.5	491.7	10 960.1	5 729.2	16 689.3	4.4	4.5	65.7
2007											
January	7 381.3	2 831.1	10 212.4	401.9	538.0	10 750.4	5 962.5	16 712.8	5.2	5.0	64.3
February	7 460.5	2 867.2	10 327.7	388.8	567.5	10 895.2	5 841.4	16 736.6	5.0	5.2	65.1
March	7 421.7	2 970.7	10 392.4	344.1	511.5	10 903.9	5 856.3	16 760.2	4.4	4.7	65.1
April	7 406.4	2 997.3	10 403.7	331.8	484.8	10 888.5	5 895.4	16 783.9	4.3	4.5	64.9
May	7 478.9	2 972.4	10 451.2	324.9	466.4	10 917.6	5 890.3	16 807.9	4.2	4.3	65.0
June	7 448.6	3 024.7	10 473.3	326.2	459.8	10 933.1	5 898.5	16 831.6	4.2	4.2	65.0
July	7 524.9	2 963.1	10 488.0	298.6	426.6	10 914.6	5 940.9	16 855.5	3.8	3.9	64.8



## LABOUR FORCE STATUS (AGED 15 YEARS &amp; OVER)—New South Wales

	TREND					SEASONALLY ADJUSTED					
	Employed full time	Total employed	Total unemp-loyed	Unemp-loyment rate	Partici-pation rate	Employed full time	Total employed	Total unemp-loyed	Unemp-loyment rate	Partici-pation rate	Civilian population aged 15 years and over
	'000	'000	'000	%	%	'000	'000	'000	%	%	'000
MALES											
July 2004	1 514.8	1 775.0	98.3	5.2	70.5	1 513.7	1 774.8	99.8	5.3	70.6	2 656.5
July 2005	1 534.5	1 792.6	95.8	5.1	70.4	1 527.5	1 789.7	89.5	4.8	70.1	2 682.6
2006											
July	1 539.4	1 817.1	101.5	5.3	70.8	1 544.6	1 826.9	99.4	5.2	71.1	2 708.8
August	1 538.0	1 821.9	101.0	5.3	70.9	1 538.0	1 820.6	102.1	5.3	70.9	2 711.1
September	1 536.7	1 826.7	99.2	5.2	71.0	1 535.4	1 825.4	101.6	5.3	71.0	2 713.3
October	1 536.8	1 830.9	96.6	5.0	70.9	1 532.5	1 829.3	98.0	5.1	70.9	2 717.1
November	1 539.0	1 834.1	93.8	4.9	70.9	1 539.1	1 832.7	94.6	4.9	70.8	2 720.9
December	1 543.7	1 836.6	91.0	4.7	70.8	1 541.9	1 846.8	85.1	4.4	70.9	2 724.8
2007											
January	1 550.4	1 839.0	88.6	4.6	70.7	1 550.5	1 833.9	87.9	4.6	70.5	2 727.7
February	1 557.8	1 841.9	87.1	4.5	70.6	1 561.0	1 839.4	91.8	4.8	70.7	2 730.7
March	1 564.6	1 845.3	86.2	4.5	70.7	1 561.3	1 843.0	84.0	4.4	70.5	2 733.6
April	1 570.0	1 849.6	85.4	4.4	70.7	1 573.4	1 850.8	85.7	4.4	70.8	2 736.5
May	1 574.2	1 854.4	84.7	4.4	70.8	1 578.6	1 854.3	83.7	4.3	70.7	2 739.5
June	1 577.5	1 858.8	84.0	4.3	70.9	1 576.2	1 861.3	84.6	4.3	71.0	2 742.4
July	1 579.4	1 863.4	83.3	4.3	70.9	1 575.8	1 864.8	83.3	4.3	71.0	2 745.4
FEMALES											
July 2004	802.6	1 411.6	83.0	5.6	54.4	801.0	1 409.9	86.8	5.8	54.5	2 745.2
July 2005	809.9	1 454.1	74.3	4.9	55.2	806.5	1 460.8	75.4	4.9	55.5	2 767.9
2006											
July	831.8	1 473.4	77.6	5.0	55.5	825.4	1 468.7	69.8	4.5	55.1	2 793.9
August	835.8	1 476.5	76.7	4.9	55.5	837.8	1 476.2	82.6	5.3	55.7	2 796.4
September	839.2	1 479.2	76.5	4.9	55.6	837.8	1 479.6	78.5	5.0	55.7	2 798.9
October	841.4	1 481.4	77.5	5.0	55.6	845.5	1 479.4	68.6	4.4	55.2	2 802.1
November	841.6	1 482.4	79.6	5.1	55.7	841.5	1 477.5	79.4	5.1	55.5	2 805.5
December	840.1	1 482.4	82.6	5.3	55.7	842.1	1 495.5	86.5	5.5	56.3	2 808.7
2007											
January	837.7	1 481.4	85.7	5.5	55.7	837.9	1 482.7	85.1	5.4	55.8	2 811.4
February	835.7	1 480.6	87.7	5.6	55.7	835.5	1 475.8	88.6	5.7	55.6	2 814.0
March	835.0	1 481.0	88.4	5.6	55.7	829.6	1 475.5	88.7	5.7	55.5	2 816.6
April	835.5	1 482.6	87.5	5.6	55.7	827.4	1 474.4	90.3	5.8	55.5	2 819.5
May	836.6	1 485.2	86.2	5.5	55.7	850.1	1 495.3	87.6	5.5	56.1	2 822.4
June	837.7	1 487.8	84.6	5.4	55.7	836.3	1 493.4	79.8	5.1	55.7	2 825.2
July	838.9	1 490.9	83.3	5.3	55.7	837.4	1 487.4	82.6	5.3	55.5	2 828.2
PERSONS											
July 2004	2 317.4	3 186.6	181.4	5.4	62.3	2 314.7	3 184.7	186.5	5.5	62.4	5 401.6
July 2005	2 344.5	3 246.8	170.1	5.0	62.7	2 334.1	3 250.5	164.9	4.8	62.7	5 450.5
2006											
July	2 371.2	3 290.5	179.0	5.2	63.1	2 370.0	3 295.6	169.3	4.9	63.0	5 502.7
August	2 373.8	3 298.4	177.7	5.1	63.1	2 375.8	3 296.7	184.7	5.3	63.2	5 507.4
September	2 375.8	3 305.9	175.7	5.0	63.1	2 373.3	3 304.9	180.1	5.2	63.2	5 512.2
October	2 378.2	3 312.2	174.1	5.0	63.2	2 378.0	3 308.8	166.7	4.8	63.0	5 519.3
November	2 380.6	3 316.5	173.4	5.0	63.2	2 380.6	3 310.2	174.0	5.0	63.0	5 526.4
December	2 383.7	3 319.0	173.5	5.0	63.1	2 384.0	3 342.3	171.6	4.9	63.5	5 533.5
2007											
January	2 388.1	3 320.4	174.3	5.0	63.1	2 388.4	3 316.6	173.0	5.0	63.0	5 539.1
February	2 393.5	3 322.5	174.8	5.0	63.1	2 396.5	3 315.1	180.4	5.2	63.0	5 544.6
March	2 399.6	3 326.3	174.5	5.0	63.1	2 390.9	3 318.5	172.7	4.9	62.9	5 550.2
April	2 405.5	3 332.3	173.0	4.9	63.1	2 400.8	3 325.2	176.1	5.0	63.0	5 556.0
May	2 410.8	3 339.6	170.8	4.9	63.1	2 428.7	3 349.7	171.3	4.9	63.3	5 561.8
June	2 415.2	3 346.6	168.7	4.8	63.1	2 412.6	3 354.7	164.3	4.7	63.2	5 567.6
July	2 418.2	3 354.2	166.5	4.7	63.2	2 413.1	3 352.2	165.9	4.7	63.1	5 573.6

LABOUR FORCE STATUS (AGED 15 YEARS & OVER)—Victoria

	TREND					SEASONALLY ADJUSTED					
	<i>Employed full time</i>	<i>Total employed</i>	<i>Total unemp-loyed</i>	<i>Unemp-loyment rate</i>	<i>Partici-pation rate</i>	<i>Employed full time</i>	<i>Total employed</i>	<i>Total unemp-loyed</i>	<i>Unemp-loyment rate</i>	<i>Partici-pation rate</i>	<i>Civilian population aged 15 years and over</i>
	'000	'000	'000	%	%	'000	'000	'000	%	%	'000
MALES											
July 2004	1 129.5	1 330.8	78.1	5.5	71.8	1 127.4	1 329.8	75.8	5.4	71.7	1 961.0
July 2005	1 167.8	1 375.6	70.8	4.9	72.7	1 169.6	1 377.0	70.3	4.9	72.7	1 989.3
2006											
July	1 171.9	1 391.1	69.5	4.8	72.4	1 172.6	1 388.6	74.6	5.1	72.6	2 016.2
August	1 174.0	1 394.2	68.3	4.7	72.4	1 173.6	1 395.9	66.1	4.5	72.4	2 018.6
September	1 175.0	1 396.5	67.4	4.6	72.4	1 188.1	1 404.2	65.3	4.4	72.7	2 021.0
October	1 175.4	1 398.1	66.7	4.6	72.3	1 170.6	1 395.8	67.7	4.6	72.3	2 024.9
November	1 176.0	1 399.6	66.4	4.5	72.3	1 169.9	1 394.0	63.7	4.4	71.9	2 028.6
December	1 177.7	1 401.9	66.5	4.5	72.3	1 177.3	1 403.5	69.4	4.7	72.5	2 032.5
2007											
January	1 181.6	1 405.7	66.5	4.5	72.3	1 179.3	1 402.1	66.5	4.5	72.1	2 035.8
February	1 187.4	1 410.6	66.1	4.5	72.4	1 190.0	1 413.7	65.6	4.4	72.6	2 039.0
March	1 194.2	1 416.1	64.9	4.4	72.5	1 194.4	1 416.0	66.2	4.5	72.6	2 042.3
April	1 200.3	1 421.1	63.5	4.3	72.6	1 199.6	1 420.5	63.1	4.3	72.5	2 045.6
May	1 205.5	1 425.5	62.0	4.2	72.6	1 208.6	1 428.3	63.1	4.2	72.8	2 048.8
June	1 209.8	1 429.1	60.5	4.1	72.6	1 210.7	1 428.3	58.0	3.9	72.4	2 052.0
July	1 213.1	1 432.1	59.4	4.0	72.6	1 211.6	1 432.2	59.6	4.0	72.6	2 054.5
FEMALES											
July 2004	584.9	1 075.5	63.9	5.6	55.3	581.1	1 076.0	65.4	5.7	55.4	2 059.1
July 2005	597.6	1 104.7	68.3	5.8	56.3	600.7	1 091.5	69.8	6.0	55.8	2 083.0
2006											
July	607.8	1 138.2	62.1	5.2	56.9	606.0	1 140.3	63.2	5.3	57.1	2 109.0
August	610.0	1 139.8	61.3	5.1	56.9	609.4	1 141.7	56.0	4.7	56.7	2 111.3
September	612.0	1 140.7	60.8	5.1	56.8	624.1	1 141.8	54.5	4.6	56.6	2 113.6
October	614.3	1 141.6	61.1	5.1	56.8	604.7	1 141.6	61.0	5.1	56.8	2 116.9
November	617.1	1 143.3	61.9	5.1	56.8	613.4	1 138.4	62.4	5.2	56.6	2 120.2
December	620.5	1 146.7	62.9	5.2	57.0	621.3	1 145.2	63.0	5.2	56.9	2 123.6
2007											
January	624.5	1 151.4	64.0	5.3	57.2	629.5	1 152.0	65.1	5.4	57.2	2 126.4
February	628.4	1 156.6	64.8	5.3	57.4	623.0	1 158.0	63.9	5.2	57.4	2 129.3
March	631.4	1 161.0	65.1	5.3	57.5	638.2	1 158.8	65.2	5.3	57.4	2 132.2
April	632.9	1 164.2	65.0	5.3	57.6	629.1	1 173.1	65.3	5.3	58.0	2 135.1
May	633.6	1 166.3	64.7	5.3	57.6	637.7	1 165.4	64.3	5.2	57.5	2 137.9
June	633.8	1 167.7	64.2	5.2	57.6	633.3	1 160.9	67.7	5.5	57.4	2 140.8
July	633.6	1 168.4	63.5	5.2	57.5	630.2	1 170.4	59.4	4.8	57.4	2 143.4
PERSONS											
July 2004	1 714.4	2 406.3	142.0	5.6	63.4	1 708.5	2 405.8	141.2	5.5	63.4	4 020.2
July 2005	1 765.4	2 480.3	139.1	5.3	64.3	1 770.3	2 468.5	140.1	5.4	64.1	4 072.3
2006											
July	1 779.7	2 529.2	131.6	4.9	64.5	1 778.6	2 528.9	137.8	5.2	64.6	4 125.2
August	1 783.9	2 534.0	129.6	4.9	64.5	1 783.0	2 537.6	122.1	4.6	64.4	4 129.9
September	1 787.0	2 537.2	128.2	4.8	64.4	1 812.2	2 546.0	119.9	4.5	64.5	4 134.6
October	1 789.7	2 539.7	127.8	4.8	64.4	1 775.3	2 537.3	128.7	4.8	64.4	4 141.8
November	1 793.1	2 542.9	128.4	4.8	64.4	1 783.2	2 532.4	126.0	4.7	64.1	4 148.9
December	1 798.2	2 548.6	129.4	4.8	64.4	1 798.7	2 548.7	132.4	4.9	64.5	4 156.0
2007											
January	1 806.1	2 557.1	130.5	4.9	64.6	1 808.8	2 554.1	131.6	4.9	64.5	4 162.2
February	1 815.8	2 567.2	130.8	4.8	64.7	1 813.0	2 571.8	129.6	4.8	64.8	4 168.3
March	1 825.6	2 577.1	130.0	4.8	64.8	1 832.6	2 574.8	131.4	4.9	64.8	4 174.5
April	1 833.3	2 585.3	128.5	4.7	64.9	1 828.7	2 593.6	128.4	4.7	65.1	4 180.6
May	1 839.1	2 591.7	126.7	4.7	64.9	1 846.3	2 593.7	127.4	4.7	65.0	4 186.7
June	1 843.6	2 596.7	124.7	4.6	64.9	1 844.0	2 589.2	125.8	4.6	64.8	4 192.8
July	1 846.7	2 600.5	123.0	4.5	64.9	1 841.8	2 602.6	119.0	4.4	64.8	4 198.0

LABOUR FORCE STATUS (AGED 15 YEARS & OVER)—Queensland

	TREND					SEASONALLY ADJUSTED					
	Employed full time	Total employed	Total unemployed	Unemployment rate	Participation rate	Employed full time	Total employed	Total unemployed	Unemployment rate	Participation rate	Civilian population aged 15 years and over
	'000	'000	'000	%	%	'000	'000	'000	%	%	'000
MALES											
July 2004	898.6	1 043.8	57.2	5.2	72.5	901.9	1 041.6	59.9	5.4	72.5	1 519.0
July 2005	940.2	1 095.4	50.7	4.4	73.7	942.1	1 096.4	50.2	4.4	73.7	1 555.5
2006											
July	961.5	1 120.5	47.6	4.1	73.3	960.0	1 123.3	46.0	3.9	73.3	1 594.2
August	964.7	1 124.3	47.6	4.1	73.4	966.5	1 125.3	46.0	3.9	73.3	1 597.2
September	968.3	1 129.3	47.3	4.0	73.5	969.9	1 125.2	54.9	4.7	73.8	1 600.1
October	972.9	1 135.4	46.5	3.9	73.6	966.4	1 132.1	41.9	3.6	73.2	1 604.7
November	978.7	1 142.4	45.3	3.8	73.8	977.5	1 140.8	47.2	4.0	73.8	1 609.3
December	985.5	1 149.8	44.0	3.7	74.0	988.0	1 153.8	41.6	3.5	74.1	1 613.9
2007											
January	992.7	1 156.9	42.7	3.6	74.2	995.9	1 160.9	43.3	3.6	74.5	1 617.3
February	999.1	1 162.4	41.6	3.5	74.3	994.2	1 160.2	40.6	3.4	74.1	1 620.9
March	1 004.0	1 166.1	40.6	3.4	74.3	1 008.7	1 165.7	43.5	3.6	74.4	1 624.4
April	1 007.3	1 168.6	39.4	3.3	74.2	1 007.8	1 169.3	38.2	3.2	74.2	1 627.7
May	1 009.5	1 170.5	38.0	3.1	74.1	1 012.5	1 172.9	37.4	3.1	74.2	1 631.2
June	1 010.9	1 171.7	36.8	3.0	74.0	1 009.3	1 171.9	37.2	3.1	74.0	1 634.6
July	1 011.6	1 172.5	35.7	3.0	73.8	1 008.4	1 169.6	34.8	2.9	73.5	1 638.1
FEMALES											
July 2004	462.5	840.9	50.0	5.6	57.1	464.3	837.5	49.4	5.6	56.8	1 560.7
July 2005	491.6	896.7	52.1	5.5	59.6	493.8	899.6	52.3	5.5	59.8	1 592.4
2006											
July	521.0	928.7	48.1	4.9	60.1	520.9	930.2	48.1	4.9	60.2	1 624.3
August	526.1	935.1	47.0	4.8	60.4	525.3	935.4	48.8	5.0	60.5	1 627.0
September	530.1	940.4	46.0	4.7	60.5	533.9	951.4	46.7	4.7	61.2	1 629.7
October	532.8	944.4	45.4	4.6	60.6	531.0	941.0	42.7	4.3	60.2	1 633.4
November	534.9	947.4	45.4	4.6	60.6	536.2	943.9	44.1	4.5	60.3	1 637.2
December	537.1	950.0	45.5	4.6	60.7	540.4	946.0	45.9	4.6	60.4	1 640.9
2007											
January	540.0	952.7	45.1	4.5	60.7	530.6	954.9	44.7	4.5	60.8	1 643.9
February	543.4	955.5	44.3	4.4	60.7	544.2	956.2	49.4	4.9	61.1	1 646.9
March	546.4	957.7	43.0	4.3	60.6	546.5	959.3	44.5	4.4	60.8	1 649.9
April	548.4	958.8	41.7	4.2	60.5	554.7	961.9	37.1	3.7	60.4	1 653.0
May	549.2	959.2	40.9	4.1	60.4	551.5	955.7	37.7	3.8	60.0	1 656.2
June	548.9	959.2	40.6	4.1	60.3	549.4	959.7	40.6	4.1	60.3	1 659.3
July	548.3	958.8	40.7	4.1	60.2	539.4	957.7	45.5	4.5	60.3	1 662.8
PERSONS											
July 2004	1 361.1	1 884.7	107.2	5.4	64.7	1 366.2	1 879.1	109.3	5.5	64.6	3 079.7
July 2005	1 431.8	1 992.1	102.7	4.9	66.5	1 435.8	1 996.0	102.5	4.9	66.7	3 147.9
2006											
July	1 482.4	2 049.3	95.7	4.5	66.6	1 480.9	2 053.5	94.2	4.4	66.7	3 218.6
August	1 490.8	2 059.4	94.6	4.4	66.8	1 491.8	2 060.7	94.8	4.4	66.9	3 224.2
September	1 498.5	2 069.7	93.3	4.3	66.9	1 503.8	2 076.6	101.7	4.7	67.4	3 229.8
October	1 505.7	2 079.7	91.9	4.2	67.1	1 497.4	2 073.1	84.5	3.9	66.6	3 238.1
November	1 513.6	2 089.7	90.7	4.2	67.2	1 513.8	2 084.7	91.3	4.2	67.0	3 246.5
December	1 522.6	2 099.8	89.5	4.1	67.3	1 528.4	2 099.9	87.4	4.0	67.2	3 254.8
2007											
January	1 532.8	2 109.6	87.9	4.0	67.4	1 526.5	2 115.8	88.0	4.0	67.6	3 261.2
February	1 542.5	2 117.9	85.9	3.9	67.4	1 538.4	2 116.5	90.1	4.1	67.5	3 267.9
March	1 550.4	2 123.8	83.6	3.8	67.4	1 555.2	2 125.1	88.0	4.0	67.6	3 274.3
April	1 555.6	2 127.4	81.1	3.7	67.3	1 562.6	2 131.2	75.3	3.4	67.3	3 280.8
May	1 558.7	2 129.7	78.9	3.6	67.2	1 564.0	2 128.6	75.1	3.4	67.0	3 287.4
June	1 559.9	2 131.0	77.4	3.5	67.1	1 558.7	2 131.7	77.8	3.5	67.1	3 293.9
July	1 559.9	2 131.3	76.4	3.5	66.9	1 547.8	2 127.2	80.3	3.6	66.9	3 300.9

	TREND					SEASONALLY ADJUSTED					Civilian population aged 15 years and over '000
	Employed full time	Total employed	Total unemp-loyed	Unemp-loyment rate	Partici-pation rate	Employed full time	Total employed	Total unemp-loyed	Unemp-loyment rate	Partici-pation rate	
	'000	'000	'000	%	%	'000	'000	'000	%	%	
MALES											
July 2004	335.4	398.5	27.3	6.4	69.5	334.4	398.9	26.9	6.3	69.5	612.7
July 2005	343.1	407.1	22.9	5.3	69.6	341.1	406.3	22.5	5.3	69.5	617.4
2006											
July	344.8	410.5	20.4	4.7	69.1	344.7	411.3	20.2	4.7	69.2	623.5
August	346.5	411.9	20.0	4.6	69.2	345.2	412.2	20.6	4.8	69.4	623.8
September	347.2	412.7	20.3	4.7	69.4	352.0	411.8	20.2	4.7	69.2	624.2
October	346.9	412.6	21.3	4.9	69.4	347.8	416.6	18.3	4.2	69.6	625.0
November	345.8	411.7	22.5	5.2	69.4	344.8	409.4	23.2	5.4	69.1	625.8
December	344.3	410.5	23.5	5.4	69.3	342.1	410.4	25.4	5.8	69.6	626.5
2007											
January	343.0	409.6	24.1	5.5	69.1	342.5	409.4	25.5	5.9	69.3	627.1
February	342.3	409.2	24.0	5.5	69.0	342.6	410.3	23.4	5.4	69.1	627.8
March	342.3	409.5	23.4	5.4	68.9	344.1	405.5	23.2	5.4	68.2	628.4
April	342.7	410.2	22.7	5.3	68.8	339.9	410.6	22.5	5.2	68.8	629.1
May	343.1	410.8	22.3	5.1	68.8	343.3	413.9	21.3	4.9	69.1	629.7
June	343.5	411.3	22.1	5.1	68.8	344.6	412.0	22.0	5.1	68.8	630.4
July	343.9	411.7	22.1	5.1	68.8	344.3	409.9	23.3	5.4	68.6	631.1
FEMALES											
July 2004	159.4	320.8	19.8	5.8	53.5	159.3	320.8	20.9	6.1	53.7	636.4
July 2005	168.9	334.6	16.1	4.6	54.8	169.5	336.1	13.8	4.0	54.7	639.7
2006											
July	174.6	342.1	17.3	4.8	55.7	174.6	341.5	18.2	5.1	55.7	645.2
August	175.2	343.3	17.7	4.9	55.9	177.6	342.5	17.4	4.8	55.8	645.6
September	175.5	344.8	18.2	5.0	56.2	175.2	344.6	17.9	4.9	56.1	646.1
October	175.4	346.4	18.4	5.0	56.4	173.4	345.2	18.5	5.1	56.2	646.8
November	175.1	347.4	18.4	5.0	56.5	176.0	349.5	19.0	5.2	56.9	647.6
December	174.6	347.5	18.2	5.0	56.4	175.2	348.9	18.8	5.1	56.7	648.4
2007											
January	174.3	346.7	17.9	4.9	56.2	172.6	347.0	17.5	4.8	56.2	649.0
February	174.1	345.5	17.6	4.9	55.9	177.3	346.4	16.6	4.6	55.9	649.6
March	174.0	344.3	17.3	4.8	55.6	171.4	341.0	17.1	4.8	55.1	650.2
April	173.9	343.6	17.0	4.7	55.4	172.5	342.3	18.5	5.1	55.4	650.9
May	174.0	343.5	16.7	4.6	55.3	176.4	344.4	16.1	4.5	55.3	651.5
June	174.2	343.6	16.4	4.6	55.2	173.8	344.8	16.3	4.5	55.4	652.2
July	174.4	343.9	16.2	4.5	55.2	174.4	344.3	15.7	4.4	55.1	652.8
PERSONS											
July 2004	494.8	719.3	47.1	6.1	61.4	493.7	719.6	47.8	6.2	61.4	1 249.1
July 2005	512.0	741.7	39.0	5.0	62.1	510.6	742.3	36.4	4.7	61.9	1 257.1
2006											
July	519.3	752.6	37.7	4.8	62.3	519.3	752.8	38.4	4.8	62.4	1 268.6
August	521.7	755.3	37.7	4.8	62.5	522.8	754.8	38.0	4.8	62.5	1 269.5
September	522.7	757.5	38.5	4.8	62.6	527.2	756.4	38.1	4.8	62.5	1 270.3
October	522.4	759.0	39.7	5.0	62.8	521.2	761.7	36.7	4.6	62.8	1 271.8
November	520.9	759.1	40.9	5.1	62.8	520.8	759.0	42.1	5.3	62.9	1 273.4
December	518.9	758.0	41.8	5.2	62.7	517.3	759.3	44.3	5.5	63.0	1 274.9
2007											
January	517.3	756.3	42.0	5.3	62.6	515.1	756.4	43.0	5.4	62.6	1 276.1
February	516.3	754.7	41.6	5.2	62.3	519.9	756.7	40.0	5.0	62.4	1 277.3
March	516.3	753.8	40.7	5.1	62.1	515.5	746.5	40.3	5.1	61.5	1 278.5
April	516.6	753.8	39.7	5.0	62.0	512.5	752.9	41.0	5.2	62.0	1 279.9
May	517.1	754.3	39.0	4.9	61.9	519.7	758.3	37.4	4.7	62.1	1 281.3
June	517.7	754.9	38.5	4.8	61.9	518.4	756.8	38.4	4.8	62.0	1 282.6
July	518.3	755.5	38.2	4.8	61.8	518.7	754.2	39.0	4.9	61.8	1 283.9

LABOUR FORCE STATUS (AGED 15 YEARS & OVER)—Western Australia

	TREND					SEASONALLY ADJUSTED					Civilian population aged 15 years and over
	Employed full time	Total employed	Total unemployed	Unemployment rate	Participation rate	Employed full time	Total employed	Total unemployed	Unemployment rate	Participation rate	
	'000	'000	'000	%	%	'000	'000	'000	%	%	
MALES											
July 2004	471.6	552.8	26.5	4.6	73.6	472.5	550.2	26.0	4.5	73.2	787.5
July 2005	503.3	586.6	25.9	4.2	76.4	503.5	585.2	26.9	4.4	76.3	801.7
2006											
July	521.1	604.4	17.5	2.8	76.0	522.6	605.0	15.4	2.5	75.8	818.4
August	522.5	605.6	17.4	2.8	76.0	525.1	606.2	18.2	2.9	76.1	820.0
September	523.5	606.3	17.7	2.8	75.9	523.1	608.4	18.0	2.9	76.2	821.6
October	524.1	606.5	18.2	2.9	75.8	524.2	606.3	18.6	3.0	75.9	823.7
November	524.3	606.4	18.5	3.0	75.7	523.2	607.1	17.7	2.8	75.7	825.8
December	524.4	606.3	18.3	2.9	75.5	523.0	603.9	18.9	3.0	75.2	827.9
2007											
January	524.2	606.7	17.8	2.8	75.3	526.2	606.6	19.5	3.1	75.4	829.7
February	524.4	608.0	17.3	2.8	75.2	525.7	607.8	17.3	2.8	75.2	831.6
March	525.2	610.2	17.2	2.7	75.3	524.9	611.3	16.2	2.6	75.3	833.4
April	526.9	612.9	17.5	2.8	75.5	526.0	611.7	14.4	2.3	75.0	835.1
May	529.4	615.6	18.1	2.9	75.7	523.0	614.1	18.7	2.9	75.6	836.9
June	532.4	618.3	18.9	3.0	76.0	532.6	619.9	21.9	3.4	76.5	838.6
July	535.4	620.6	19.6	3.1	76.2	544.6	623.0	19.4	3.0	76.4	840.4
FEMALES											
July 2004	221.6	430.9	26.1	5.7	57.2	219.1	429.8	26.2	5.7	57.1	799.0
July 2005	238.1	458.6	23.5	4.9	59.4	239.8	457.1	24.6	5.1	59.4	811.5
2006											
July	242.7	469.5	19.5	4.0	59.3	250.3	470.4	17.5	3.6	59.2	824.3
August	242.9	469.3	19.9	4.1	59.3	240.4	468.7	21.0	4.3	59.3	825.6
September	242.9	469.4	20.1	4.1	59.2	242.4	472.4	20.2	4.1	59.6	826.8
October	243.1	470.8	19.8	4.0	59.2	237.5	463.6	23.2	4.8	58.8	828.5
November	243.9	473.2	19.0	3.9	59.3	246.4	473.4	17.8	3.6	59.2	830.2
December	245.3	476.2	17.8	3.6	59.4	249.0	476.5	16.9	3.4	59.3	831.8
2007											
January	246.9	479.1	16.8	3.4	59.5	244.8	481.4	15.7	3.2	59.7	833.3
February	248.5	481.4	16.3	3.3	59.6	246.9	484.3	17.4	3.5	60.1	834.7
March	250.1	483.0	16.6	3.3	59.7	253.7	485.2	15.7	3.1	59.9	836.2
April	251.9	484.3	17.3	3.5	59.9	249.0	477.1	16.4	3.3	58.9	837.7
May	253.9	485.8	18.1	3.6	60.0	253.1	487.0	18.2	3.6	60.2	839.1
June	256.0	487.5	18.8	3.7	60.2	256.6	487.0	21.3	4.2	60.5	840.5
July	258.0	489.0	19.4	3.8	60.4	260.3	493.0	18.5	3.6	60.7	842.1
PERSONS											
July 2004	693.2	983.7	52.6	5.1	65.3	691.6	980.0	52.2	5.1	65.1	1 586.5
July 2005	741.5	1 045.2	49.4	4.5	67.8	743.3	1 042.2	51.5	4.7	67.8	1 613.2
2006											
July	763.8	1 073.9	37.0	3.3	67.6	772.9	1 075.3	32.9	3.0	67.5	1 642.8
August	765.4	1 074.9	37.3	3.4	67.6	765.5	1 074.9	39.2	3.5	67.7	1 645.6
September	766.4	1 075.7	37.8	3.4	67.5	765.5	1 080.8	38.3	3.4	67.9	1 648.5
October	767.2	1 077.3	38.0	3.4	67.5	761.6	1 069.9	41.7	3.8	67.3	1 652.2
November	768.2	1 079.6	37.5	3.4	67.5	769.6	1 080.6	35.5	3.2	67.4	1 656.0
December	769.6	1 082.6	36.1	3.2	67.4	771.9	1 080.4	35.8	3.2	67.3	1 659.7
2007											
January	771.1	1 085.8	34.5	3.1	67.4	771.1	1 088.0	35.2	3.1	67.5	1 663.0
February	772.9	1 089.4	33.7	3.0	67.4	772.6	1 092.1	34.6	3.1	67.6	1 666.3
March	775.3	1 093.2	33.8	3.0	67.5	778.6	1 096.4	31.8	2.8	67.6	1 669.6
April	778.8	1 097.1	34.8	3.1	67.7	775.1	1 088.8	30.9	2.8	66.9	1 672.8
May	783.3	1 101.4	36.2	3.2	67.9	776.0	1 101.0	36.8	3.2	67.9	1 676.0
June	788.4	1 105.8	37.7	3.3	68.1	789.3	1 106.9	43.2	3.8	68.5	1 679.2
July	793.5	1 109.6	39.0	3.4	68.3	805.0	1 116.0	37.9	3.3	68.6	1 682.5

LABOUR FORCE STATUS (AGED 15 YEARS & OVER)—Tasmania

	TREND					SEASONALLY ADJUSTED					Civilian population aged 15 years and over
	Employed full time	Total employed	Total unemployed	Unemployment rate	Participation rate	Employed full time	Total employed	Total unemployed	Unemployment rate	Participation rate	
	'000	'000	'000	%	%	'000	'000	'000	%	%	
MALES											
July 2004	100.9	117.3	9.4	7.4	67.3	102.5	117.5	9.3	7.3	67.4	188.3
July 2005	98.8	118.9	7.9	6.2	66.6	98.3	117.9	7.9	6.3	66.1	190.5
2006											
July	101.0	120.6	9.1	7.0	67.6	100.6	120.5	9.5	7.3	67.7	191.8
August	100.8	120.4	8.9	6.9	67.4	100.6	120.3	8.1	6.3	66.9	192.0
September	100.7	120.2	8.6	6.7	67.1	101.0	120.4	8.7	6.7	67.2	192.1
October	100.7	120.2	8.4	6.5	66.8	102.0	120.7	8.3	6.4	67.0	192.3
November	100.9	120.3	8.1	6.3	66.7	99.3	119.1	8.6	6.7	66.3	192.6
December	101.2	120.7	7.9	6.1	66.7	100.9	121.0	8.0	6.2	66.9	192.8
2007											
January	101.6	121.3	7.6	5.9	66.9	102.2	121.6	7.3	5.6	66.8	192.9
February	102.2	122.1	7.3	5.7	67.1	101.9	121.8	7.4	5.7	66.9	193.0
March	102.7	122.9	7.0	5.4	67.3	103.7	123.1	6.8	5.2	67.2	193.2
April	103.3	123.7	6.6	5.1	67.4	102.7	123.5	7.4	5.6	67.7	193.3
May	103.7	124.3	6.3	4.8	67.5	103.3	125.0	6.1	4.7	67.8	193.4
June	104.1	124.9	5.9	4.5	67.6	104.2	124.4	5.5	4.2	67.1	193.5
July	104.5	125.4	5.6	4.3	67.7	105.1	125.8	5.4	4.1	67.8	193.6
FEMALES											
July 2004	47.2	95.9	5.8	5.7	51.5	48.0	96.1	6.1	6.0	51.8	197.6
July 2005	50.7	100.8	6.3	5.9	53.7	51.1	100.9	5.8	5.4	53.5	199.5
2006											
July	52.6	104.0	6.1	5.5	54.8	52.7	105.9	4.6	4.1	55.0	200.9
August	52.9	103.8	6.1	5.5	54.7	52.4	103.0	6.6	6.0	54.5	201.1
September	53.0	103.5	6.2	5.6	54.5	52.5	102.4	6.6	6.1	54.2	201.2
October	53.1	103.2	6.2	5.7	54.3	53.4	103.2	6.6	6.0	54.5	201.4
November	53.1	103.0	6.2	5.7	54.1	53.5	103.2	5.7	5.2	54.0	201.6
December	53.0	102.8	6.1	5.6	54.0	52.9	102.7	6.0	5.5	53.9	201.8
2007											
January	52.7	102.6	5.8	5.4	53.7	52.8	103.9	6.2	5.6	54.5	201.9
February	52.2	102.4	5.6	5.2	53.5	52.4	101.4	5.5	5.1	52.9	202.0
March	51.7	102.2	5.5	5.1	53.3	51.4	101.8	5.8	5.4	53.2	202.2
April	51.3	101.9	5.5	5.1	53.1	51.0	102.3	5.5	5.1	53.3	202.3
May	51.0	101.8	5.6	5.2	53.1	51.0	102.3	4.0	3.8	52.6	202.4
June	50.7	101.7	5.7	5.3	53.0	51.1	100.8	6.9	6.4	53.2	202.5
July	50.5	101.6	5.9	5.5	53.0	50.3	102.0	6.2	5.7	53.4	202.6
PERSONS											
July 2004	148.1	213.2	15.2	6.6	59.2	150.5	213.7	15.4	6.7	59.4	385.8
July 2005	149.5	219.8	14.2	6.1	60.0	149.4	218.8	13.7	5.9	59.6	390.0
2006											
July	153.6	224.6	15.2	6.3	61.1	153.3	226.4	14.0	5.8	61.2	392.7
August	153.7	224.2	15.0	6.3	60.9	153.0	223.4	14.7	6.2	60.6	393.1
September	153.7	223.8	14.8	6.2	60.6	153.5	222.8	15.3	6.4	60.5	393.4
October	153.8	223.4	14.6	6.1	60.4	155.4	223.9	14.9	6.2	60.7	393.8
November	154.0	223.3	14.3	6.0	60.3	152.8	222.3	14.2	6.0	60.0	394.2
December	154.2	223.5	14.0	5.9	60.2	153.8	223.7	14.0	5.9	60.2	394.6
2007											
January	154.3	224.0	13.5	5.7	60.2	155.0	225.5	13.5	5.6	60.5	394.8
February	154.4	224.5	13.0	5.5	60.1	154.3	223.2	12.8	5.4	59.7	395.1
March	154.5	225.1	12.5	5.3	60.1	155.1	224.9	12.6	5.3	60.1	395.3
April	154.6	225.6	12.2	5.1	60.1	153.8	225.8	12.9	5.4	60.3	395.5
May	154.7	226.1	11.8	5.0	60.1	154.3	227.3	10.2	4.3	60.0	395.8
June	154.9	226.6	11.6	4.9	60.2	155.3	225.2	12.4	5.2	60.0	396.0
July	155.0	227.0	11.5	4.8	60.2	155.4	227.8	11.6	4.8	60.4	396.2

	TREND					Civilian population aged 15 years and over
	Employed full time	Total employed	Total unemployed	Unemployment rate	Participation rate	
	'000	'000	'000	%	%	
MALES						
July 2004	42.9	51.5	3.9	7.0	74.8	74.1
July 2005	43.1	51.2	2.7	5.0	71.3	75.6
2006						
July	47.5	55.1	3.0	5.2	74.3	78.3
August	47.8	55.2	3.0	5.1	74.1	78.5
September	47.9	55.3	2.8	4.8	73.9	78.6
October	48.1	55.6	2.5	4.2	73.6	78.9
November	48.3	56.1	2.1	3.7	73.5	79.2
December	48.5	56.5	1.9	3.3	73.7	79.4
2007						
January	48.8	57.0	2.0	3.4	74.1	79.6
February	49.0	57.2	2.3	3.8	74.6	79.7
March	49.3	57.5	2.6	4.3	75.2	79.9
April	49.7	57.8	2.9	4.8	75.7	80.1
May	50.1	58.2	3.1	5.1	76.2	80.4
June	50.5	58.5	3.2	5.2	76.7	80.6
July	50.8	58.8	3.3	5.3	76.9	80.7
FEMALES						
July 2004	29.3	43.8	2.6	5.6	66.4	69.8
July 2005	31.3	43.8	2.2	4.7	64.9	70.9
2006						
July	33.3	46.9	1.8	3.7	67.1	72.5
August	33.6	46.7	1.5	3.1	66.4	72.6
September	33.8	46.5	1.2	2.6	65.7	72.6
October	34.0	46.4	1.0	2.2	65.2	72.8
November	34.1	46.4	1.0	2.1	65.0	72.9
December	33.9	46.2	1.1	2.3	64.9	73.0
2007						
January	33.7	46.1	1.3	2.7	64.9	73.1
February	33.4	46.1	1.5	3.1	65.0	73.1
March	33.3	46.1	1.6	3.4	65.2	73.2
April	33.4	46.3	1.7	3.6	65.4	73.4
May	33.6	46.5	1.8	3.7	65.7	73.5
June	33.9	46.9	1.8	3.7	66.1	73.7
July	34.2	47.3	1.8	3.7	66.5	73.8
PERSONS						
July 2004	72.2	95.3	6.5	6.4	70.8	143.9
July 2005	74.4	95.1	4.8	4.8	68.2	146.4
2006						
July	80.8	102.0	4.8	4.5	70.8	150.8
August	81.4	101.9	4.5	4.2	70.4	151.0
September	81.8	101.9	4.0	3.8	70.0	151.3
October	82.1	102.1	3.5	3.3	69.6	151.7
November	82.3	102.4	3.1	3.0	69.4	152.0
December	82.4	102.8	3.0	2.9	69.5	152.4
2007						
January	82.5	103.1	3.3	3.1	69.7	152.7
February	82.5	103.3	3.7	3.5	70.0	152.9
March	82.7	103.7	4.2	3.9	70.4	153.1
April	83.1	104.1	4.6	4.3	70.8	153.5
May	83.7	104.7	4.9	4.5	71.2	153.9
June	84.3	105.4	5.0	4.6	71.6	154.2
July	85.0	106.0	5.1	4.6	72.0	154.5

	TREND					<i>Civilian population aged 15 years and over</i>
	<i>Employed full time</i>	<i>Total employed</i>	<i>Total unemployed</i>	<i>Unemployment rate</i>	<i>Participation rate</i>	
	'000	'000	'000	%	%	
MALES						
July 2004	77.3	91.6	3.8	4.0	76.6	124.5
July 2005	80.0	93.9	3.0	3.1	77.0	126.0
2006						
July	81.6	95.9	3.4	3.4	78.0	127.3
August	82.2	96.4	3.2	3.2	78.2	127.4
September	82.7	96.8	3.1	3.1	78.3	127.6
October	83.1	97.1	3.0	3.0	78.4	127.8
November	83.4	97.4	3.0	3.0	78.4	128.1
December	83.4	97.6	3.0	3.0	78.4	128.3
2007						
January	83.4	97.7	3.1	3.0	78.4	128.6
February	83.3	98.0	3.1	3.1	78.5	128.8
March	83.3	98.3	3.2	3.1	78.6	129.1
April	83.5	98.6	3.2	3.1	78.8	129.2
May	83.8	98.8	3.2	3.1	78.8	129.4
June	84.0	99.0	3.1	3.1	78.8	129.5
July	84.4	99.1	3.0	3.0	78.7	129.8
FEMALES						
July 2004	52.8	84.3	3.0	3.4	66.2	132.0
July 2005	54.5	86.7	2.8	3.2	67.4	132.8
2006						
July	58.9	90.9	2.3	2.4	69.4	134.3
August	59.4	91.5	2.3	2.5	69.8	134.4
September	59.6	91.8	2.4	2.6	70.0	134.5
October	59.5	91.7	2.6	2.7	70.0	134.7
November	59.4	91.4	2.7	2.9	69.8	134.9
December	59.2	91.0	2.8	2.9	69.4	135.0
2007						
January	59.0	90.5	2.7	2.9	69.0	135.2
February	58.7	90.1	2.7	2.9	68.5	135.3
March	58.5	89.7	2.7	2.9	68.2	135.5
April	58.3	89.5	2.6	2.9	67.9	135.6
May	58.1	89.2	2.7	2.9	67.7	135.7
June	58.0	89.1	2.7	2.9	67.6	135.8
July	57.9	88.9	2.8	3.0	67.5	136.0
PERSONS						
July 2004	130.1	175.9	6.8	3.7	71.2	256.6
July 2005	134.4	180.6	5.9	3.1	72.1	258.8
2006						
July	140.5	186.8	5.6	2.9	73.6	261.6
August	141.5	187.9	5.5	2.9	73.9	261.8
September	142.2	188.6	5.5	2.9	74.1	262.1
October	142.6	188.9	5.6	2.9	74.1	262.5
November	142.7	188.8	5.7	2.9	74.0	262.9
December	142.6	188.5	5.8	3.0	73.8	263.4
2007						
January	142.3	188.2	5.8	3.0	73.6	263.8
February	142.0	188.0	5.8	3.0	73.4	264.1
March	141.9	188.0	5.8	3.0	73.3	264.5
April	141.8	188.0	5.8	3.0	73.2	264.8
May	141.9	188.1	5.8	3.0	73.1	265.1
June	142.0	188.1	5.8	3.0	73.1	265.3
July	142.2	188.0	5.8	3.0	73.0	265.8



Original—July 2007

	EMPLOYED			UNEMPLOYED			UNEMPLOYMENT RATE			Participation rate	
	Full time	Part time	Total	Looking for f/t work	Total	Labour force	Not in labour force	Civilian population aged 15 years and over	Looking for f/t work		Total
	'000	'000	'000	'000	'000	'000	'000	'000	%		%
MALES											
New South Wales	1 579.7	287.3	1 867.0	63.1	76.0	1 943.0	802.4	2 745.4	3.8	3.9	70.8
Victoria	1 213.7	222.7	1 436.4	39.7	53.4	1 489.8	564.8	2 054.5	3.2	3.6	72.5
Queensland	1 009.0	161.3	1 170.3	23.6	32.0	1 202.3	435.8	1 638.1	2.3	2.7	73.4
South Australia	344.0	67.1	411.1	17.8	20.9	431.9	199.2	631.1	4.9	4.8	68.4
Western Australia	543.9	79.1	623.0	14.4	18.3	641.4	199.0	840.4	2.6	2.9	76.3
Tasmania	103.3	21.7	125.0	5.1	5.6	130.6	63.0	193.6	4.7	4.3	67.4
Northern Territory	52.0	7.7	59.7	*0.6	2.5	62.2	18.5	80.7	*1.1	4.0	77.1
Australian Capital Territory	85.4	14.7	100.1	*1.3	2.2	102.4	27.4	129.8	*1.5	2.2	78.9
<b>Australia</b>	<b>4 931.0</b>	<b>861.7</b>	<b>5 792.6</b>	<b>165.7</b>	<b>210.9</b>	<b>6 003.6</b>	<b>2 310.1</b>	<b>8 313.6</b>	<b>3.3</b>	<b>3.5</b>	<b>72.2</b>
FEMALES											
New South Wales	834.9	654.0	1 488.9	49.7	76.9	1 565.7	1 262.5	2 828.2	5.6	4.9	55.4
Victoria	629.5	540.2	1 169.7	31.5	55.4	1 225.1	918.4	2 143.4	4.8	4.5	57.2
Queensland	547.4	414.8	962.2	26.1	41.2	1 003.5	659.4	1 662.8	4.6	4.1	60.3
South Australia	176.9	167.5	344.4	10.1	15.3	359.7	293.1	652.8	5.4	4.3	55.1
Western Australia	260.4	231.2	491.6	8.9	16.6	508.2	333.9	842.1	3.3	3.3	60.4
Tasmania	50.2	51.8	102.0	5.0	5.9	107.9	94.7	202.6	9.0	5.5	53.3
Northern Territory	35.5	12.2	47.7	*0.7	*1.9	49.6	24.2	73.8	*1.9	*3.8	67.2
Australian Capital Territory	59.2	29.8	88.9	*1.0	2.5	91.4	44.7	136.0	*1.7	2.7	67.2
<b>Australia</b>	<b>2 593.9</b>	<b>2 101.4</b>	<b>4 695.3</b>	<b>132.9</b>	<b>215.7</b>	<b>4 911.1</b>	<b>3 630.8</b>	<b>8 541.9</b>	<b>4.9</b>	<b>4.4</b>	<b>57.5</b>
PERSONS											
New South Wales	2 414.6	941.3	3 355.9	112.8	152.9	3 508.8	2 064.9	5 573.6	4.5	4.4	63.0
Victoria	1 843.2	762.9	2 606.0	71.1	108.8	2 714.8	1 483.2	4 198.0	3.7	4.0	64.7
Queensland	1 556.4	576.1	2 132.5	49.8	73.3	2 205.8	1 095.1	3 300.9	3.1	3.3	66.8
South Australia	520.8	234.7	755.5	27.9	36.2	791.7	492.3	1 283.9	5.1	4.6	61.7
Western Australia	804.3	310.3	1 114.6	23.2	35.0	1 149.6	532.9	1 682.5	2.8	3.0	68.3
Tasmania	153.5	73.5	227.0	10.1	11.5	238.5	157.7	396.2	6.2	4.8	60.2
Northern Territory	87.5	19.9	107.4	*1.3	4.4	111.8	42.7	154.5	*1.4	3.9	72.3
Australian Capital Territory	144.6	44.5	189.1	2.3	4.7	193.8	72.1	265.8	1.6	2.4	72.9
<b>Australia</b>	<b>7 524.9</b>	<b>2 963.1</b>	<b>10 488.0</b>	<b>298.6</b>	<b>426.6</b>	<b>10 914.6</b>	<b>5 940.9</b>	<b>16 855.5</b>	<b>3.8</b>	<b>3.9</b>	<b>64.8</b>

\* estimate is subject to sampling variability too high for most practical purposes

	EMPLOYED		UNEMPLOYED		UNEMPLOYMENT RATE		Participation rate	Employment to population ratio	Unemployment to population ratio – looking for full-time work
	Full time	Total	Looking for f/t work	Total	Looking for f/t work	Total			
	'000	'000	'000	'000	%	%			
MALES									
July 2004	147.0	347.4	35.3	67.7	19.4	16.3	58.5	48.9	5.0
July 2005	160.5	356.6	35.8	64.8	18.3	15.4	59.0	49.9	5.0
2006									
July	155.1	357.7	35.3	66.2	18.6	15.6	58.9	49.7	4.9
August	154.7	358.1	34.9	65.5	18.4	15.5	58.9	49.8	4.9
September	154.6	358.6	34.5	64.5	18.3	15.2	58.8	49.8	4.8
October	154.3	358.7	34.1	63.4	18.1	15.0	58.6	49.8	4.7
November	153.7	358.9	33.6	61.9	17.9	14.7	58.3	49.7	4.7
December	153.4	359.8	32.9	60.2	17.7	14.3	58.1	49.8	4.6
2007									
January	153.7	361.1	32.0	58.8	17.2	14.0	58.0	49.9	4.4
February	154.8	362.4	31.2	57.7	16.8	13.7	57.9	50.0	4.3
March	156.9	363.8	30.7	57.0	16.4	13.6	58.0	50.1	4.2
April	159.3	365.0	30.6	56.5	16.1	13.4	58.0	50.2	4.2
May	161.5	365.9	30.7	56.1	16.0	13.3	58.0	50.3	4.2
June	163.4	366.5	31.0	55.9	16.0	13.2	58.0	50.3	4.3
July	164.8	366.9	31.4	55.8	16.0	13.2	58.0	50.3	4.3
FEMALES									
July 2004	85.8	355.4	26.6	62.5	23.7	15.0	61.3	52.1	3.9
July 2005	86.2	362.9	25.7	61.2	23.0	14.4	62.0	53.1	3.8
2006									
July	83.9	362.5	26.1	59.2	23.7	14.0	61.4	52.8	3.8
August	85.5	364.3	26.1	57.3	23.4	13.6	61.3	53.0	3.8
September	86.3	364.5	26.1	55.9	23.2	13.3	61.1	53.0	3.8
October	86.2	363.3	26.3	55.6	23.4	13.3	60.8	52.7	3.8
November	85.5	361.2	26.4	56.3	23.6	13.5	60.5	52.4	3.8
December	84.8	359.6	26.3	57.3	23.7	13.7	60.3	52.0	3.8
2007									
January	84.7	359.4	25.9	58.1	23.4	13.9	60.4	52.0	3.7
February	85.1	360.9	25.2	58.3	22.8	13.9	60.5	52.1	3.6
March	85.5	363.1	24.3	57.8	22.1	13.7	60.7	52.4	3.5
April	85.7	365.2	23.4	56.9	21.5	13.5	60.8	52.6	3.4
May	85.7	366.7	22.8	56.1	21.0	13.3	60.8	52.8	3.3
June	85.5	367.8	22.3	55.4	20.7	13.1	60.8	52.8	3.2
July	85.1	368.5	22.2	55.0	20.7	13.0	60.8	52.9	3.2
PERSONS									
July 2004	232.7	702.8	61.9	130.2	21.0	15.6	59.8	50.5	4.4
July 2005	246.7	719.5	61.6	126.0	20.0	14.9	60.5	51.4	4.4
2006									
July	238.9	720.2	61.4	125.4	20.4	14.8	60.1	51.2	4.4
August	240.2	722.5	61.0	122.8	20.2	14.5	60.1	51.3	4.3
September	240.9	723.1	60.6	120.4	20.1	14.3	59.9	51.4	4.3
October	240.4	722.0	60.4	119.0	20.1	14.1	59.7	51.2	4.3
November	239.2	720.1	60.0	118.2	20.1	14.1	59.4	51.0	4.3
December	238.2	719.4	59.2	117.5	19.9	14.0	59.2	50.9	4.2
2007									
January	238.4	720.6	57.9	116.9	19.6	14.0	59.2	50.9	4.1
February	239.9	723.3	56.4	116.0	19.0	13.8	59.2	51.0	4.0
March	242.4	726.9	55.0	114.8	18.5	13.6	59.3	51.2	3.9
April	245.0	730.2	54.0	113.4	18.1	13.4	59.4	51.4	3.8
May	247.2	732.6	53.5	112.2	17.8	13.3	59.4	51.5	3.8
June	248.8	734.2	53.4	111.4	17.7	13.2	59.4	51.5	3.7
July	250.0	735.4	53.5	110.8	17.6	13.1	59.4	51.6	3.8

	EMPLOYED		UNEMPLOYED		UNEMPLOYMENT RATE		Participation rate	Employment to population ratio	Unemployment to population ratio – looking for full-time work
	Full time	Total	Looking for f/t work	Total	Looking for f/t work	Total			
	'000	'000	'000	'000	%	%			
MALES									
July 2004	149.7	351.6	34.5	62.4	18.7	15.1	58.3	49.5	4.9
July 2005	160.1	353.3	34.1	64.4	17.6	15.4	58.5	49.4	4.8
2006									
July	147.7	356.2	36.8	64.9	19.9	15.4	58.5	49.5	5.1
August	154.3	356.4	33.3	64.6	17.7	15.3	58.5	49.5	4.6
September	156.9	355.9	34.9	71.3	18.2	16.7	59.4	49.5	4.8
October	155.3	362.9	26.5	58.6	14.6	13.9	58.5	50.4	3.7
November	155.3	357.7	34.5	62.0	18.2	14.8	58.2	49.6	4.8
December	153.4	360.1	32.4	60.0	17.4	14.3	58.1	49.8	4.5
2007									
January	152.6	361.0	33.0	59.2	17.8	14.1	58.1	49.9	4.6
February	149.7	358.9	31.8	58.9	17.5	14.1	57.6	49.5	4.4
March	156.7	364.0	28.9	56.2	15.6	13.4	57.9	50.1	4.0
April	163.9	369.7	29.8	53.9	15.4	12.7	58.3	50.8	4.1
May	164.0	368.8	30.1	57.9	15.5	13.6	58.6	50.7	4.1
June	159.4	358.3	33.0	56.7	17.2	13.7	57.0	49.2	4.5
July	165.6	369.9	31.6	55.7	16.0	13.1	58.4	50.7	4.3
FEMALES									
July 2004	83.0	354.0	28.5	63.8	25.5	15.3	61.3	51.9	4.2
July 2005	86.2	362.4	26.3	66.6	23.4	15.5	62.7	53.0	3.9
2006									
July	89.9	366.6	23.2	57.0	20.5	13.5	61.6	53.3	3.4
August	89.6	366.6	29.0	58.9	24.5	13.8	61.9	53.3	4.2
September	82.9	368.9	24.3	54.1	22.7	12.8	61.5	53.6	3.5
October	88.0	363.1	26.0	53.6	22.8	12.9	60.5	52.7	3.8
November	85.0	354.6	25.3	55.3	22.9	13.5	59.4	51.4	3.7
December	83.6	362.0	28.0	59.3	25.1	14.1	61.0	52.4	4.0
2007									
January	83.9	359.1	26.8	58.7	24.2	14.0	60.4	51.9	3.9
February	85.2	359.1	24.9	60.2	22.6	14.4	60.5	51.9	3.6
March	86.0	363.2	24.5	56.8	22.2	13.5	60.6	52.4	3.5
April	86.6	362.9	21.6	56.6	20.0	13.5	60.4	52.3	3.1
May	86.1	372.8	24.0	56.6	21.8	13.2	61.8	53.6	3.4
June	85.5	369.3	20.9	53.2	19.6	12.6	60.7	53.1	3.0
July	83.5	363.8	23.7	56.5	22.1	13.5	60.3	52.2	3.4
PERSONS									
July 2004	232.7	705.6	63.0	126.2	21.3	15.2	59.8	50.7	4.5
July 2005	246.3	715.7	60.5	131.1	19.7	15.5	60.5	51.2	4.3
2006									
July	237.6	722.8	59.9	121.9	20.1	14.4	60.1	51.4	4.3
August	243.9	723.0	62.3	123.5	20.3	14.6	60.2	51.4	4.4
September	239.8	724.8	59.2	125.4	19.8	14.8	60.4	51.5	4.2
October	243.3	726.0	52.5	112.1	17.7	13.4	59.5	51.5	3.7
November	240.3	712.3	59.8	117.3	19.9	14.1	58.8	50.5	4.2
December	236.9	722.2	60.3	119.3	20.3	14.2	59.5	51.1	4.3
2007									
January	236.5	720.1	59.8	117.9	20.2	14.1	59.2	50.9	4.2
February	234.8	718.0	56.7	119.1	19.4	14.2	59.0	50.6	4.0
March	242.7	727.1	53.4	113.0	18.0	13.5	59.2	51.2	3.8
April	250.5	732.6	51.4	110.4	17.0	13.1	59.3	51.5	3.6
May	250.1	741.6	54.1	114.5	17.8	13.4	60.2	52.1	3.8
June	244.9	727.6	53.9	109.9	18.0	13.1	58.8	51.1	3.8
July	249.2	733.7	55.3	112.2	18.2	13.3	59.3	51.5	3.9

	EMPLOYED			UNEMPLOYED			Civilian population aged 15–19 years	UNEMPLOYMENT RATE		Participation rate	Unemployment to population ratio – looking for full-time work	
	Full time	Part time	Total	Looking for f/t work	Total	Labour force		Not in labour force	Looking for f/t work			Total
	'000	'000	'000	'000	'000	'000		'000	%			%
NOT ATTENDING FULL-TIME EDUCATION												
<b>Males</b>												
July 2004	141.9	37.3	179.2	24.6	26.0	205.2	26.4	231.6	14.8	12.7	88.6	10.6
July 2005	151.7	36.4	188.1	23.5	23.5	211.6	23.3	235.0	13.4	11.1	90.1	10.0
July 2006	138.6	45.7	184.3	25.6	26.7	211.0	25.9	236.9	15.6	12.7	89.1	10.8
July 2007	155.8	37.7	193.5	22.9	24.3	217.8	23.6	241.4	12.8	11.2	90.2	9.5
<b>Females</b>												
July 2004	75.9	59.3	135.2	19.7	22.9	158.1	29.3	187.4	20.6	14.5	84.4	10.5
July 2005	76.6	55.4	131.9	18.5	21.1	153.0	30.0	183.0	19.5	13.8	83.6	10.1
July 2006	77.5	51.6	129.1	19.9	21.9	151.0	33.8	184.9	20.4	14.5	81.7	10.8
July 2007	71.2	48.9	120.1	18.1	19.8	139.9	26.3	166.2	20.2	14.2	84.2	10.9
<b>Persons</b>												
July 2004	217.8	96.6	314.4	44.3	48.9	363.3	55.7	419.0	16.9	13.5	86.7	10.6
July 2005	228.2	91.8	320.0	42.0	44.6	364.7	53.3	418.0	15.5	12.2	87.2	10.1
July 2006	216.0	97.4	313.4	45.5	48.7	362.1	59.7	421.8	17.4	13.4	85.8	10.8
July 2007	227.0	86.5	313.6	41.0	44.1	357.7	49.9	407.6	15.3	12.3	87.8	10.1
ATTENDING FULL-TIME EDUCATION												
<b>Males</b>												
July 2004	13.5	161.4	174.8	*3.4	26.0	200.9	277.5	478.4	*20.4	13.0	42.0	*0.7
July 2005	14.4	152.6	167.0	*4.2	29.9	196.9	282.7	479.6	*22.7	15.2	41.1	*0.9
July 2006	14.6	158.2	172.8	*4.2	26.9	199.7	282.6	482.3	*22.5	13.5	41.4	*0.9
July 2007	15.9	160.9	176.8	*2.8	21.6	198.5	289.2	487.7	*14.9	10.9	40.7	*0.6
<b>Females</b>												
July 2004	8.7	208.8	217.5	6.4	30.0	247.4	247.3	494.8	42.3	12.1	50.0	1.3
July 2005	10.7	218.2	228.9	5.8	34.5	263.3	237.7	501.0	35.1	13.1	52.6	1.2
July 2006	13.1	222.5	235.6	*1.7	26.0	261.6	240.7	502.3	*11.7	9.9	52.1	*0.3
July 2007	12.8	228.8	241.6	*4.0	28.0	269.6	260.8	530.4	*23.9	10.4	50.8	*0.8
<b>Persons</b>												
July 2004	22.1	370.2	392.3	9.8	56.0	448.3	524.8	973.1	30.7	12.5	46.1	1.0
July 2005	25.2	370.7	395.9	10.1	64.4	460.3	520.4	980.7	28.5	14.0	46.9	1.0
July 2006	27.7	380.7	408.4	6.0	52.9	461.3	523.3	984.6	17.7	11.5	46.9	0.6
July 2007	28.7	389.7	418.4	6.8	49.6	468.1	550.0	1 018.1	19.2	10.6	46.0	0.7
TOTAL												
<b>Males</b>												
July 2004	155.4	198.7	354.0	28.0	52.0	406.1	303.9	710.0	15.3	12.8	57.2	3.9
July 2005	166.1	189.0	355.1	27.8	53.4	408.6	306.0	714.6	14.3	13.1	57.2	3.9
July 2006	153.2	203.9	357.1	29.9	53.6	410.7	308.5	719.2	16.3	13.1	57.1	4.2
July 2007	171.8	198.6	370.3	25.7	45.9	416.3	312.8	729.1	13.0	11.0	57.1	3.5
<b>Females</b>												
July 2004	84.6	268.1	352.6	26.1	52.9	405.5	276.6	682.1	23.6	13.0	59.4	3.8
July 2005	87.3	273.5	360.8	24.3	55.6	416.4	267.7	684.0	21.8	13.3	60.9	3.6
July 2006	90.6	274.1	364.7	21.6	48.0	412.6	274.6	687.2	19.3	11.6	60.0	3.1
July 2007	84.0	277.7	361.7	22.1	47.8	409.5	287.2	696.6	20.8	11.7	58.8	3.2
<b>Persons</b>												
July 2004	239.9	466.7	706.7	54.1	104.9	811.6	580.5	1 392.1	18.4	12.9	58.3	3.9
July 2005	253.4	462.6	715.9	52.1	109.0	824.9	573.7	1 398.6	17.0	13.2	59.0	3.7
July 2006	243.8	478.1	721.8	51.5	101.6	823.4	583.1	1 406.4	17.4	12.3	58.5	3.7
July 2007	255.8	476.2	732.0	47.8	93.7	825.7	600.0	1 425.7	15.7	11.4	57.9	3.4

\* estimate is subject to sampling variability too high for most practical purposes

	EMPLOYED			UNEMPLOYED		Labour force	Not in labour force	Civilian population aged 15–19 years	UNEMPLOYMENT RATE		Participation rate	Unemployment to population ratio – looking for full-time work
	Full time	Part time	Total	Looking for f/t work	Total				Looking for f/t work	Total		
	'000	'000	'000	'000	'000				'000	'000		
NOT ATTENDING FULL-TIME EDUCATION												
New South Wales	58.9	25.0	83.9	19.0	20.2	104.1	17.5	121.6	24.4	19.4	85.6	15.6
Victoria	41.0	17.1	58.0	7.9	9.2	67.2	7.5	74.8	16.2	13.7	90.0	10.6
Queensland	60.5	20.6	81.1	6.0	6.0	87.1	11.5	98.6	9.0	6.9	88.4	6.1
South Australia	15.0	8.6	23.6	*2.6	2.8	26.4	4.3	30.7	*14.8	10.6	86.0	*8.4
Western Australia	39.9	10.5	50.4	3.3	3.5	53.9	5.0	58.8	7.6	6.5	91.6	5.6
Tasmania	5.2	2.4	7.7	1.7	1.7	9.3	*1.2	10.5	24.2	17.9	88.4	15.8
Northern Territory	3.6	*1.2	4.8	*—	*0.2	5.1	2.7	7.7	*—	*4.5	65.4	*—
Australian Capital Territory	3.0	*1.1	4.0	*0.5	*0.5	4.5	*0.2	4.8	*15.1	*11.6	94.8	*11.0
<b>Australia</b>	<b>227.0</b>	<b>86.5</b>	<b>313.6</b>	<b>41.0</b>	<b>44.1</b>	<b>357.7</b>	<b>49.9</b>	<b>407.6</b>	<b>15.3</b>	<b>12.3</b>	<b>87.8</b>	<b>10.1</b>
ATTENDING FULL-TIME EDUCATION												
New South Wales	8.2	113.7	121.9	*3.0	14.8	136.7	205.7	342.4	*26.4	10.8	39.9	*0.9
Victoria	5.2	110.6	115.9	*1.0	14.0	129.9	140.8	270.7	*16.5	10.8	48.0	*0.4
Queensland	9.5	81.9	91.5	*1.2	10.2	101.7	90.6	192.3	*11.5	10.0	52.9	*0.6
South Australia	*0.6	28.9	29.5	*0.7	4.0	33.5	40.1	73.6	*50.3	11.9	45.5	*0.9
Western Australia	4.1	37.1	41.2	*0.5	4.1	45.3	44.3	89.6	*10.4	9.0	50.6	*0.5
Tasmania	*0.2	7.2	7.4	*0.5	*0.8	8.3	15.3	23.6	*70.8	*10.0	35.0	*1.9
Northern Territory	*0.2	2.1	2.3	*—	*0.4	2.7	4.9	7.6	*—	*15.6	35.1	*—
Australian Capital Territory	*0.6	8.1	8.8	*—	*1.3	10.1	8.3	18.3	*—	*13.0	54.9	*—
<b>Australia</b>	<b>28.7</b>	<b>389.7</b>	<b>418.4</b>	<b>6.8</b>	<b>49.6</b>	<b>468.1</b>	<b>550.0</b>	<b>1 018.1</b>	<b>19.2</b>	<b>10.6</b>	<b>46.0</b>	<b>0.7</b>
TOTAL												
New South Wales	67.1	138.7	205.8	22.0	35.0	240.8	223.3	464.1	24.7	14.5	51.9	4.7
Victoria	46.2	127.7	173.9	8.9	23.2	197.1	148.3	345.4	16.2	11.8	57.1	2.6
Queensland	70.1	102.5	172.6	7.3	16.2	188.8	102.1	290.9	9.4	8.6	64.9	2.5
South Australia	15.6	37.5	53.1	3.2	6.8	59.9	44.4	104.3	17.2	11.3	57.4	3.1
Western Australia	44.0	47.7	91.6	3.8	7.6	99.2	49.3	148.4	7.9	7.6	66.8	2.5
Tasmania	5.4	9.7	15.1	2.1	2.5	17.6	16.5	34.1	28.1	14.2	51.5	6.2
Northern Territory	3.8	3.3	7.1	*—	*0.6	7.7	7.6	15.3	*—	*8.3	50.4	*—
Australian Capital Territory	3.6	9.2	12.8	*0.5	1.8	14.6	8.5	23.1	*12.8	12.6	63.1	*2.3
<b>Australia</b>	<b>255.8</b>	<b>476.2</b>	<b>732.0</b>	<b>47.8</b>	<b>93.7</b>	<b>825.7</b>	<b>600.0</b>	<b>1 425.7</b>	<b>15.7</b>	<b>11.4</b>	<b>57.9</b>	<b>3.4</b>

\* estimate is subject to sampling variability too high for most practical purposes

— nil or rounded to zero (including null cells)

## WHAT IF...? REVISIONS TO TREND ESTIMATES

### EFFECT OF NEW SEASONALLY ADJUSTED ESTIMATES ON TREND ESTIMATES

#### TREND REVISIONS

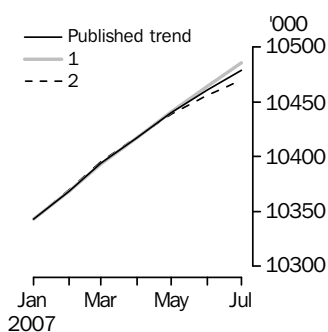
Each time new seasonally adjusted estimates become available, trend estimates are revised. This revision is a combined result of the concurrent seasonal adjustment process and the application of surrogates of the Henderson average to the seasonally adjusted series (see paragraphs 25 to 33 of the Explanatory Notes).

The examples in the tables below show two illustrative scenarios and the consequent revisions to previous trend estimates of employment and the unemployment rate. The revisions in the scenarios below are only due to the use of surrogates of the Henderson average, as the impact of revision of the seasonally adjusted estimates can not be estimated in advance.

- (1) The August seasonally adjusted estimate is *higher* than the July estimate by:  
0.26% for employment  
1.80% for the unemployment rate
- (2) The August seasonally adjusted estimate is *lower* than the July estimate by:  
0.26% for employment  
1.80% for the unemployment rate

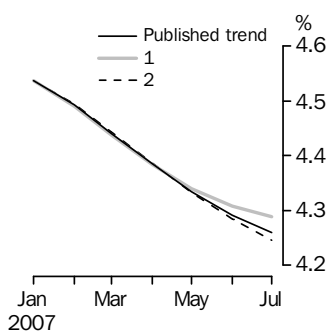
The percentage changes of 0.26% and 1.80% were chosen because they represent the average absolute monthly percentage changes in employment and the unemployment rate respectively.

#### EMPLOYMENT



	Trend as published	WHAT IF NEXT MONTH'S SEASONALLY ADJUSTED ESTIMATE IS:	
		(1) 10 511.0 i.e. rises by 0.26%	(2) 10 456.5 i.e. falls by 0.26%
<b>2007</b>			
April	10 417.3	10 417.2	10 418.1
May	10 440.1	10 440.8	10 438.3
June	10 460.6	10 464.1	10 456.0
July	10 478.5	10 485.1	10 469.9

#### UNEMPLOYMENT RATE



	Trend as published	WHAT IF NEXT MONTH'S SEASONALLY ADJUSTED ESTIMATE IS:	
		(1) 4.3 i.e. rises by 1.80%	(2) 4.2 i.e. falls by 1.80%
<b>2007</b>			
April	4.4	4.4	4.4
May	4.3	4.3	4.3
June	4.3	4.3	4.3
July	4.3	4.3	4.2

## EXPLANATORY NOTES

### INTRODUCTION

**1** This publication contains estimates of the civilian labour force derived from the Labour Force Survey component of the Monthly Population Survey. The full time series for estimates from this publication are also available electronically – see *Labour Force, Australia, Spreadsheets* (cat. no. 6202.0.55.001). More detailed estimates are released one week after this publication in various electronic formats – see *Labour Force, Australia, Detailed – Electronic Delivery* (cat. no. 6291.0.55.001) and *Labour Force, Australia, Detailed, Quarterly* (cat. no. 6291.0.55.003).

### CONCEPTS, SOURCES AND METHODS

**2** The conceptual framework used in Australia's Labour Force Survey aligns closely with the standards and guidelines set out in Resolutions of International Conferences of Labour Statisticians. Descriptions of the underlying concepts and structure of Australia's labour force statistics, and the sources and methods used in compiling the estimates, are presented in *Labour Statistics: Concepts, Sources and Methods* (cat. no. 6102.0.55.001) which is available on the ABS website <<http://www.abs.gov.au>> (Methods, Classifications, Concepts & Standards).

### LABOUR FORCE SURVEY

**3** The Labour Force Survey is based on a multi-stage area sample of private dwellings (currently about 30,000 houses, flats, etc.) and a list sample of non-private dwellings (hotels, motels, etc.), and covers about 0.45% of the population of Australia. Information is obtained from the occupants of selected dwellings by specially trained interviewers.

**4** The information is collected using computer-assisted interviewing (CAI), whereby responses are recorded directly onto an electronic questionnaire on a notebook computer. The CAI method was progressively implemented from October 2003 to August 2004, replacing the 'pen and paper' method previously used.

**5** Households selected for the Labour Force Survey are interviewed each month for eight months, with one-eighth of the sample being replaced each month. The first interview is conducted face-to-face. Subsequent interviews are conducted by telephone (if acceptable to the respondent).

**6** The interviews are generally conducted during the two weeks beginning on the Monday between the 6th and 12th of each month. The information obtained relates to the week before the interview (i.e. the reference week). Each year, to deal with operational difficulties involved with collecting and processing the Labour Force Survey around the Christmas and New Year holiday period, interviews for December start four weeks after November interviews start, and January interviews start five weeks after December interviews start. As a result, January interviewing may commence as early as the 8th or as late as the 14th, depending on the year. Occasionally, circumstances that present significant operational difficulties for survey collection can result in a change to the normal pattern for the start of interviewing.

**7** Estimates from the Labour Force Survey are published first in this publication 31 days after the commencement of interviews for that month, with the exception of estimates for each December which are published 38 days after the commencement of interviews.

### SCOPE OF SURVEY

**8** The Labour Force Survey includes all persons aged 15 years and over except members of the permanent defence forces, certain diplomatic personnel of overseas governments customarily excluded from census and estimated population counts, overseas residents in Australia, and members of non-Australian defence forces (and their dependants) stationed in Australia.

### COVERAGE

**9** In the Labour Force Survey, coverage rules are applied which aim to ensure that each person is associated with only one dwelling, and hence has only one chance of selection. The coverage rules are necessarily a balance between theoretical and operational considerations. Nevertheless, the chance of a person being enumerated at two separate dwellings in the survey is considered to be negligible.

## EXPLANATORY NOTES *continued*

### POPULATION BENCHMARKS

**10** Labour Force Survey estimates are calculated in such a way as to add up to independent estimates of the civilian population aged 15 years and over (population benchmarks). These population benchmarks are projections of the most recently released quarterly Estimated Resident Population (ERP) data. For information on the methodology used to produce the ERP see *Australian Demographic Statistics Quarterly* (cat. no. 3101.0). To create the population benchmarks for the Labour Force Survey, the most recently released quarterly ERP estimates are projected forward one quarter past the period for which they are required. The projection is based on the historical pattern of each population component - births, deaths, interstate migration and overseas migration. By projecting one quarter past that needed for the current population benchmarks, demographic changes are smoothed in, thereby making them less noticeable in the population benchmarks.

**11** The ERP series are revised annually in the March quarter issue of *Australian Demographic Statistics Quarterly* (cat. no. 3101.0), released in September each year, to incorporate more up to date information available for the population components. The revised ERP estimates are used to update the quarterly population projections used in creating the Labour Force Survey population benchmarks. Benchmarks already used in producing Labour Force Survey estimates are not updated. A process of smoothing is used in the creation of population benchmarks to reduce the effect of these annual revisions to ERP estimates on the Labour Force Survey population benchmarks.

**12** Every five years the ERP series are revised to incorporate additional information available from the latest Census of Population and Housing. Following the incorporation of Census information, the ERP series prior to the latest Census are final and subject to no further revision. Labour Force Survey population benchmarks, and the estimates, are revised following this 5-yearly revision in the ERP. From the February 2004 issue of this publication, labour force estimates have been compiled using population benchmarks based on the results of the 2001 Census of Population and Housing. Revisions were made in that issue to historical labour force estimates from January 1999 to January 2004.

### ESTIMATION METHOD

**13** The estimation method used in the Labour Force Survey is Composite Estimation, which was introduced in May 2007. Composite Estimation combines data collected in the previous six months with current month's data to produce the current month's estimates, thereby exploiting the high correlation between overlapping samples across months in the Labour Force Survey. The Composite Estimator combines the previous and current months' data by applying different factors according to length of time in the survey. After these factors are applied, the seven months of data are weighted to align with current month population benchmarks. For details see *Information Paper: Forthcoming Changes to Labour Force Statistics, 2007* (cat. no. 6292.0).

### COMPARABILITY OF SERIES

**14** From April 1986, the definition of employed persons was changed to include persons who worked without pay between 1 and 14 hours per week in a family business or on a farm (i.e. contributing family workers). For further information, see paragraphs 36 and 37 of the Explanatory Notes to the February 1987 issue of *Labour Force, Australia* (cat. no. 6203.0).

**15** The ABS introduced telephone interviewing into the Labour Force Survey in August 1996. Implementation was phased in for each new sample group from August 1996 to February 1997. During the period of implementation, the new method produced different estimates than would have been obtained under the old methodology. The effect dissipated over the final months of implementation and was no longer discernible from February 1997. The estimates for February 1997 and onwards are directly comparable to estimates for periods prior to August 1996. For further details, see the feature article in the June 1997 issue of *Labour Force, Australia* (cat. no. 6203.0).



## EXPLANATORY NOTES *continued*

### COMPARABILITY OF SERIES

*continued*

**16** From April 2001 the Labour Force Survey has been conducted using a redesigned questionnaire containing additional data items and some minor definitional changes. The definition of unemployed persons was changed to include all persons who were waiting to start work and were available to start in the reference week. This change was introduced in February 2004, when historical unit record data were revised from April 2001 to January 2004. This revision created a small trend break at April 2001 in unemployed persons and unemployment rate series. For further details, see *Information Paper: Forthcoming Changes to Labour Force Statistics* (cat. no. 6292.0), released in December 2003.

**17** Core labour force series were revised in April 2001 for the period April 1986 to March 2001 for the remaining definitional changes introduced with the redesigned questionnaire, to reduce the impact of the changes on labour force series. For further details, see *Information Paper: Implementing the Redesigned Labour Force Survey Questionnaire* (cat. no. 6295.0) and *Information Paper: Questionnaires Used in the Labour Force Survey* (cat. no. 6232.0).

**18** In May 2007, an improved method of estimation, known as composite estimation, was introduced into the Labour Force Survey. In introducing this change the ABS revised unit record data from April 2001 to April 2007 based on the new estimation method. While estimates for periods prior to April 2001 are unrevised and were compiled using a different estimation method, no trend break was identified in the employed persons series. Also, no change was identified in the trend breaks in the unemployed persons and unemployment rate series which arose with the introduction of a redesigned survey form in April 2001 (as noted above in paragraph 16). For further details, see *Information Paper: Forthcoming Changes to Labour Force Statistics, 2007* (cat. no. 6292.0), released on 21 May 2007.

### SURVEY SAMPLE REDESIGN

**19** The Labour Force Survey sample was last reselected using information collected in the 2001 Census of Population and Housing.

**20** The bulk of the new sample was phased in over the period November 2002 to June 2003, with one-eighth of this portion of the sample being introduced every month. The remainder of the sample (about 18% of the total), which covers less settled areas of Australia and non-private dwellings was rotated in full for New South Wales, Victoria, Tasmania, Northern Territory and Australian Capital Territory in November 2002, and for Queensland, South Australia and Western Australia in December 2002. Such a pattern of implementation means that any changes to labour force estimates due to differences between the two samples, or any other influences, were spread over the eight months.

**21** For further details, see *Information Paper: Labour Force Survey Sample Design* (cat. no. 6269.0) and *Technical Report: New Labour Force Survey sample selections: analysis of the effect on estimates* in the October 2003 issue of *Australian Labour Market Statistics* (cat. no. 6105.0).

### RELIABILITY OF ESTIMATES

**22** Two types of error are possible in an estimate based on a sample survey: sampling error and non-sampling error.

**23** Sampling error occurs because a sample, rather than the entire population, is surveyed. One measure of the likely difference resulting from not including all dwellings in the survey is given by the standard error. There are about two chances in three that a sample estimate will differ by less than one standard error from the figure that would have been obtained if all dwellings had been included in the survey, and about nineteen chances in twenty that the difference will be less than two standard errors. Standard errors of estimates for the latest month and of estimates of movements since the previous month are shown on pages 28 and 29. Standard errors of other estimates and other movements may be determined by using information in the paper *Labour Force*

## EXPLANATORY NOTES *continued*

### RELIABILITY OF ESTIMATES

*continued*

*Survey Standard Errors* (cat. no. 6298.0) which is available free of charge on the ABS website <<http://www.abs.gov.au>> (Statistics).

**24** Non-sampling error arises from inaccuracies in collecting, recording and processing the data. Every effort is made to minimise reporting error by the careful design of questionnaires, intensive training and supervision of interviewers, and efficient data processing procedures. Non-sampling error also arises because information cannot be obtained from all persons selected in the survey. The Labour Force Survey receives a high level of co-operation from individuals in selected dwellings, with the average response rate over the last year being 96%. See Glossary for definition of response rate.

### SEASONAL ADJUSTMENT AND TREND ESTIMATION

**25** Seasonal adjustment is a means of removing the estimated effects of normal seasonal variation from the series so that the effects of other influences on the series can be more clearly recognised. Seasonal adjustment does not aim to remove the irregular or non-seasonal influences which may be present in any particular month. This means that month-to-month movements of the seasonally adjusted estimates may not be reliable indicators of trend behaviour.

**26** The Labour Force Survey uses the concurrent seasonal adjustment method to derive seasonal factors. Concurrent seasonal adjustment uses data up to the current month to estimate seasonal factors for the current and all previous months. This process can result in revisions each month to estimates for earlier periods. However, in most instances, the only noticeable revisions will be to the seasonally adjusted estimates for the previous month and one year prior to the current month.

**27** Seasonal adjustment is able to remove the effect of events which occur at the same time in the survey every year. However, there are some events, like holidays, which are not always at the same time in the survey cycle or which are not at the same time across Australia. The effects of these types of events on Labour Force Survey estimates cannot in all cases be removed, because the pattern of their effects cannot be determined. However, two events which are adjusted for in the seasonally adjusted series are the January interview start date and the timing of Easter.

**28** For more information on concurrent seasonal adjustment and survey proximity to holiday periods, see *Information Paper: Forthcoming Changes to Labour Force Statistics* (cat. no. 6292.0) released in December 2003.

**29** While seasonal factors for the complete time series are estimated each month, they will continue to be reviewed annually at a more detailed level to take into account each additional year's original data. This annual review will not normally result in significant changes to published estimates. The review is usually conducted in February each year with the results released in the February issue of this publication. In 2007 the review was delayed to coincide with the introduction of composite estimation and the results have been published in the May 2007 issue. Revised historical data concurrently released with this issue carry the outcome of the review.

**30** The smoothing of seasonally adjusted series to produce 'trend' series reduces the impact of the irregular component of the seasonally adjusted series. These trend estimates are derived by applying a 13-term Henderson-weighted moving average to all months except the last six. The last six monthly trend estimates are obtained by applying surrogates of the Henderson average to the seasonally adjusted series. Trend estimates are used to analyse the underlying behaviour of a series over time.

**31** While this smoothing technique enables estimates to be produced for the latest month, it does result in revisions in addition to those caused by the revision of seasonally adjusted estimates. Generally, revisions due to the use of surrogates of the Henderson average become smaller, and after three months have a negligible impact on the series.

## EXPLANATORY NOTES *continued*

### SEASONAL ADJUSTMENT AND TREND ESTIMATION *continued*

**32** Trend estimates are published for the Northern Territory in table 10 and for the Australian Capital Territory in table 11. Unadjusted series for the two territories have shown, historically, a high degree of variability, which can lead to considerable revisions to the seasonally adjusted estimates each month when seasonal factors are estimated. For this reason, seasonally adjusted estimates are not currently published for the two Territories. In addition, caution should be exercised in the interpretation of trend estimates for the two territories, particularly for the three most recent months, where revisions may be relatively large.

**33** For further information, see *A Guide to Interpreting Time Series – Monitoring Trends* (cat. no. 1349.0) or contact the Assistant Director, Time Series Analysis on (02) 6252 6345.

### RELATED PUBLICATIONS

**34** Users may also wish to refer to *Australian Labour Market Statistics* (cat. no. 6105.0). This publication contains additional tables and a detailed list of related publications. For further information about this publication, please contact the Assistant Director, Labour Market Statistics on (02) 6252 7636.

**35** ABS Information about the labour market can be found on the Labour theme page on the ABS website <<http://www.abs.gov.au>> (Themes), or from ABS Bookshops.

**36** Current publications and other products released by the ABS are listed in the *Catalogue of Publications and Products* (cat. no. 1101.0). The Catalogue is available from any ABS office or the ABS website <<http://www.abs.gov.au>> (Statistics). The ABS also issues a daily Release Advice on the website (Future Releases) which details products to be released in the week ahead.

### DATA AVAILABLE ON REQUEST

**37** As well as the statistics included in this and related publications, the ABS may have other relevant data available. Inquiries should be made to the Labour Force contact officer on (02) 6252 6525 or to any ABS office.

### EFFECTS OF ROUNDING

**38** Estimates have been rounded and discrepancies may occur between sums of the component items and totals.

**39** Estimates of movement shown in this publication are obtained by taking the difference of unrounded estimates. The movement estimate is then rounded to one decimal place. Therefore where a discrepancy occurs between the reported movement and the difference of the rounded estimates, the reported movement will be more accurate.

### SYMBOLS AND ABBREVIATIONS

#### 40 SYMBOLS AND ABBREVIATIONS

'000	thousands
ABS	Australian Bureau of Statistics
CAI	computer assisted interviewing
cat. no.	catalogue number
ERP	estimated resident population
f/t	full-time
LFS	Labour Force Survey
p/t	part-time
pts	percentage points
Seas adj.	seasonally adjusted
TAFE	Technical and Further Education

## STANDARD ERRORS

### STANDARD ERRORS

The estimates in this publication are based on information gained from the occupants of a sample survey of dwellings. Because the entire population is not surveyed, the published estimates are subject to sampling error. The most common way of quantifying such sampling error is to calculate the standard error for the published estimate or statistic. For more information, see paragraph 23 of the Explanatory Notes.

### LEVEL ESTIMATES

To illustrate, let us say the published level estimate for employed persons aged 15–19 years is 700,000 and the associated standard error is 9,800. The standard error is then used to interpret the level estimate of 700,000. For instance, the standard error of 9,800 indicates that:

- There are approximately two chances in three that the real value falls within the range 690,200 to 709,800 (700,000 + or – 9,800)
- There are approximately nineteen chances in twenty that the real value falls within the range 680,400 to 719,600 (700,000 + or – 19,600).

The real value in this case is the result we would obtain if we could enumerate the total population.

The following table shows the standard errors for this month's level estimates.

AUSTRALIA												
.....												
		NSW	Vic.	Qld	SA	WA	Tas.	NT	ACT	Males	Females	Persons
<b>Aged 15 years and over</b>												
Employed												
Full time	'000	18.6	18.1	13.1	6.0	7.9	2.5	4.9	2.0	23.8	16.6	28.7
Part time	'000	12.6	10.9	8.1	4.2	5.3	1.8	1.5	1.3	9.2	14.7	18.0
Total	'000	20.5	21.8	14.8	6.9	8.6	2.9	5.7	2.1	25.7	23.2	32.4
Unemployed												
Looking for f/t work	'000	6.8	5.0	3.9	2.3	2.1	1.1	0.4	0.5	7.0	6.2	9.4
Looking for p/t work	'000	3.9	3.5	2.6	1.2	1.5	0.4	0.7	0.5	3.6	4.9	6.1
Total	'000	8.0	6.2	4.7	2.6	2.6	1.1	0.9	0.7	7.9	8.0	11.3
Labour force	'000	20.7	22.2	15.0	7.0	8.7	3.0	5.9	2.1	26.1	23.7	32.9
Not in labour force	'000	19.3	20.3	13.0	6.3	8.2	2.9	4.5	1.9	21.3	25.7	30.3
Unemployment rate												
Looking for f/t work	pts	0.3	0.3	0.2	0.4	0.3	0.6	0.5	0.3	0.1	0.2	0.1
Looking for p/t work	pts	0.4	0.4	0.4	0.5	0.5	0.5	2.9	1.0	0.4	0.2	0.2
Total	pts	0.2	0.2	0.2	0.3	0.2	0.5	0.8	0.3	0.1	0.2	0.1
Participation rate	pts	0.4	0.5	0.5	0.5	0.5	0.8	3.8	0.8	0.3	0.3	0.2
<b>Aged 15–19 years</b>												
Employed												
Full time	'000	3.2	2.5	2.6	1.0	1.7	0.5	0.5	0.4	4.4	3.4	5.2
Part time	'000	4.2	3.7	3.1	1.5	1.7	0.6	0.5	0.5	4.7	5.4	6.9
Total	'000	5.0	4.4	4.0	1.7	2.5	0.7	0.7	0.6	6.1	6.1	8.4
Unemployed												
Looking for f/t work	'000	2.9	1.7	1.4	0.7	0.8	0.5	—	0.2	2.7	2.5	3.7
Looking for p/t work	'000	2.2	2.1	1.5	0.8	0.8	0.2	0.3	0.4	2.4	2.7	3.6
Total	'000	3.7	2.7	2.1	1.1	1.2	0.5	0.3	0.4	3.6	3.7	5.2
Labour force	'000	5.5	4.7	4.3	1.9	2.6	0.8	0.7	0.7	6.5	6.4	9.0
Not in labour force	'000	7.5	5.5	4.2	2.2	2.6	1.0	1.1	0.7	7.3	7.0	10.3
Unemployment rate												
Looking for f/t work	pts	3.1	2.9	1.7	3.8	1.7	5.9	—	5.5	1.3	2.3	1.2
Looking for p/t work	pts	1.4	1.5	1.4	1.9	1.6	1.9	7.3	3.3	1.1	0.9	0.7
Total	pts	1.5	1.3	1.1	1.8	1.2	2.8	3.8	2.8	0.9	0.9	0.6
Participation rate	pts	1.2	1.4	1.5	1.8	1.7	2.3	4.6	2.9	0.9	0.9	0.6
Unemployment to population ratio – looking for f/t work	pts	0.6	0.5	0.5	0.7	0.6	1.4	—	1.0	0.4	0.4	0.3

— nil or rounded to zero (including null cells)

## STANDARD ERRORS *continued*

### MOVEMENT ESTIMATES

The following example illustrates how to use the standard error to interpret a movement estimate. Let us say that one month the published level estimate for females employed part-time in Australia is 1,890,000; the next month the published level estimate is 1,900,000 and the associated standard error for the movement estimate is 10,600. The standard error is then used to interpret the published movement estimate of 10,000. For instance, the standard error of 10,600 indicates that:

- There are approximately two chances in three that the real movement between the two months falls within the range -600 to 20,600 (10,000 + or - 10,600)
- There are approximately nineteen chances in twenty that the real movement falls within the range -11,200 to 31,200 (10,000 + or - 21,200).

The following table shows the standard errors for this month's movement estimates.

		AUSTRALIA										
		NSW	Vic.	Qld	SA	WA	Tas.	NT	ACT	Males	Females	Persons
<b>Aged 15 years and over</b>												
Employed												
Full time	'000	12.4	9.7	8.3	3.4	4.9	1.6	1.6	1.4	15.4	11.1	19.4
Part time	'000	7.9	6.2	5.0	2.4	3.1	1.1	0.8	0.8	6.7	10.1	12.0
Total	'000	14.8	11.6	10.8	4.6	6.1	1.9	1.8	1.6	16.8	15.0	23.4
Unemployed												
Looking for f/t work	'000	7.0	5.3	4.3	2.2	2.5	1.0	0.6	0.6	7.6	6.6	10.1
Looking for p/t work	'000	4.1	3.5	2.7	1.2	1.7	0.6	0.6	0.5	3.7	5.2	6.4
Total	'000	8.2	6.4	5.2	2.5	3.0	1.1	0.8	0.8	8.5	8.4	12.1
Labour force	'000	15.2	11.9	11.2	4.8	6.2	2.0	1.8	1.6	17.1	15.4	23.9
Not in labour force	'000	14.1	11.1	9.7	4.6	5.4	2.0	1.5	1.5	13.1	16.7	21.9
Unemployment rate												
Looking for f/t work	pts	0.3	0.3	0.3	0.4	0.3	0.6	0.6	0.4	0.1	0.2	0.1
Looking for p/t work	pts	0.4	0.5	0.4	0.5	0.5	0.7	3.0	1.0	0.4	0.2	0.2
Total	pts	0.2	0.2	0.2	0.3	0.3	0.5	0.9	0.4	0.1	0.2	0.1
Participation rate	pts	0.3	0.3	0.3	0.4	0.4	0.5	1.2	0.6	0.2	0.2	0.1
<b>Aged 15-19 years</b>												
Employed												
Full time	'000	2.5	1.9	2.0	0.8	1.4	0.4	0.4	0.3	3.4	2.7	4.0
Part time	'000	3.3	2.8	2.4	1.1	1.5	0.5	0.4	0.4	3.6	4.2	5.2
Total	'000	3.9	3.2	3.0	1.3	1.9	0.6	0.5	0.5	4.6	4.6	6.1
Unemployed												
Looking for f/t work	'000	2.9	1.7	1.7	0.9	0.9	0.5	0.1	0.2	3.0	2.6	3.9
Looking for p/t work	'000	2.3	2.1	1.7	0.8	0.9	0.4	0.2	0.4	2.5	2.9	3.8
Total	'000	3.7	2.7	2.5	1.2	1.3	0.6	0.3	0.5	4.0	3.8	5.5
Labour force	'000	4.1	3.3	3.1	1.4	1.9	0.6	0.5	0.5	4.8	4.8	6.5
Not in labour force	'000	4.8	3.5	2.9	1.4	1.8	0.7	0.7	0.5	5.2	5.0	6.9
Unemployment rate												
Looking for f/t work	pts	3.4	3.2	2.0	4.4	2.1	5.9	5.8	6.0	1.5	2.4	1.3
Looking for p/t work	pts	1.5	1.5	1.4	2.0	1.7	3.1	7.0	3.6	1.1	0.9	0.7
Total	pts	1.6	1.4	1.2	2.0	1.3	3.0	4.2	3.1	0.9	0.9	0.7
Participation rate	pts	0.9	1.0	1.1	1.3	1.3	1.8	3.3	2.2	0.7	0.7	0.5
Unemployment to population ratio - looking for f/t work												
	pts	0.6	0.5	0.6	0.9	0.6	1.4	0.9	1.0	0.4	0.4	0.3

## GLOSSARY

<b>Actively looking for work</b>	Includes writing, telephoning or applying in person to an employer for work; answering an advertisement for a job; checking factory noticeboards or the touchscreens at the Centrelink offices; being registered with Centrelink as a jobseeker; checking or registering with any other employment agency; advertising or tendering for work; and contacting friends or relatives.
<b>Attending full-time education</b>	Persons aged 15–24 years enrolled at secondary or high school or enrolled as a full-time student at a Technical and Further Education (TAFE) college, university, or other educational institution in the reference week.
<b>Attending school</b>	Persons aged 15–19 years enrolled at secondary or high school in the reference week.
<b>Attending tertiary educational institution full time</b>	Persons aged 15–24 years enrolled full time at a TAFE college, university, or other educational institution in the reference week, except those persons aged 15–19 years who were still attending school.
<b>Civilian population aged 15 years and over</b>	All usual residents of Australia aged 15 years and over except members of the permanent defence forces, certain diplomatic personnel of overseas governments customarily excluded from census and estimated population counts, overseas residents in Australia, and members of non-Australian defence forces (and their dependants) stationed in Australia.
<b>Composite Estimation</b>	The estimation methodology used in the Labour Force Survey. Composite Estimation uses sample responses from nearby months as well as from the reference month to derive estimates for the reference month. This approach achieves gains in efficiency by exploiting the high similarity between the responses provided by the same respondent in previous months. For details see <i>Information Paper: Forthcoming Changes to Labour Force Statistics, 2007</i> (cat. no. 6292.0).
<b>Employed</b>	All persons aged 15 years and over who, during the reference week: <ul style="list-style-type: none"><li>■ worked for one hour or more for pay, profit, commission or payment in kind in a job or business, or on a farm (comprising employees, employers and own account workers); or</li><li>■ worked for one hour or more without pay in a family business or on a farm (i.e. contributing family workers); or</li><li>■ were employees who had a job but were not at work and were:<ul style="list-style-type: none"><li>■ away from work for less than four weeks up to the end of the reference week; or</li><li>■ away from work for more than four weeks up to the end of the reference week and received pay for some or all of the four week period to the end of the reference week; or</li><li>■ away from work as a standard work or shift arrangement; or</li><li>■ on strike or locked out; or</li><li>■ on workers' compensation and expected to return to their job; or</li></ul></li><li>■ were employers or own account workers, who had a job, business or farm, but were not at work.</li></ul>
<b>Employment to population ratio</b>	For any group, the number of employed persons expressed as a percentage of the civilian population in the same group.
<b>Full-time workers</b>	Employed persons who usually worked 35 hours or more a week (in all jobs) and those who, although usually working less than 35 hours a week, worked 35 hours or more during the reference week.
<b>Labour force</b>	For any group, persons who were employed or unemployed, as defined.
<b>Labour force status</b>	A classification of the civilian population aged 15 years and over into employed, unemployed or not in the labour force, as defined. The definitions conform closely to the international standard definitions adopted by the International Conferences of Labour Statisticians.
<b>Not in labour force</b>	Persons who were not in the categories employed or unemployed as defined.

## GLOSSARY *continued*

<b>Participation rate</b>	For any group, the labour force expressed as a percentage of the civilian population aged 15 years and over in the same group.
<b>Part-time workers</b>	Employed persons who usually worked less than 35 hours a week (in all jobs) and either did so during the reference week, or were not at work in the reference week.
<b>Response rate</b>	The number of fully responding dwellings expressed as a percentage of the total number of dwellings excluding sample loss. Examples of sample loss include: dwellings where all persons are out of scope and/or coverage; vacant dwellings; dwellings under construction; dwellings converted to non-dwellings; derelict dwellings; and demolished dwellings.
<b>Seasonally adjusted series</b>	A time series of estimates with the estimated effects of normal seasonal variation removed. See Explanatory Notes 25 to 29 for more detail.
<b>Trend series</b>	A smoothed seasonally adjusted series of estimates. See Explanatory Notes 30 to 33 for more detail.
<b>Unemployed</b>	Persons aged 15 years and over who were not employed during the reference week, and: <ul style="list-style-type: none"><li>■ had actively looked for full-time or part-time work at any time in the four weeks up to the end of the reference week and were available for work in the reference week; or</li><li>■ were waiting to start a new job within four weeks from the end of the reference week and could have started in the reference week if the job had been available then.</li></ul>
<b>Unemployed looking for full-time work</b>	Unemployed persons who: <ul style="list-style-type: none"><li>■ actively looked for full-time work; or</li><li>■ were waiting to start a new full-time job.</li></ul>
<b>Unemployed looking for part-time work</b>	Unemployed persons who: <ul style="list-style-type: none"><li>■ actively looked for part-time work only; or</li><li>■ were waiting to start a new part-time job.</li></ul>
<b>Unemployment rate</b>	For any group, the number of unemployed persons expressed as a percentage of the labour force in the same group.
<b>Unemployment to population ratio</b>	For any group, the number of unemployed persons expressed as a percentage of the civilian population in the same group.

**FOR MORE INFORMATION . . .**

*INTERNET* **www.abs.gov.au** the ABS website is the best place for data from our publications and information about the ABS.

*LIBRARY* A range of ABS publications are available from public and tertiary libraries Australia wide. Contact your nearest library to determine whether it has the ABS statistics you require, or visit our website for a list of libraries.

**INFORMATION AND REFERRAL SERVICE**

Our consultants can help you access the full range of information published by the ABS that is available free of charge from our website, or purchase a hard copy publication. Information tailored to your needs can also be requested as a 'user pays' service. Specialists are on hand to help you with analytical or methodological advice.

*PHONE* 1300 135 070

*EMAIL* client.services@abs.gov.au

*FAX* 1300 135 211

*POST* Client Services, ABS, GPO Box 796, Sydney NSW 2001

**FREE ACCESS TO STATISTICS**

All statistics on the ABS website can be downloaded free of charge.

*WEB ADDRESS* **www.abs.gov.au**



2620200007074

ISSN 1448 2819

**RRP \$26.00**

